

Everlasting FAINT

MUSIC BY SCOTT GENDEL
LIBRETTO BY SANDRA FLORES-STRAND



WORLD PREMIERE

FEBRUARY 13 & 15, 2026

CAPITOL THEATER

**THIS PRODUCTION IS MADE POSSIBLE THROUGH
THE GENEROUS SUPPORT OF**Kay & Martin
BarrettCarla & Fernando
AlvaradoMartha & Charles
CaseyKennedy Gilchrist &
Heidi Wilde

Fran Klos

John Lemke &
Pamela OliverSusan & Jonathan
LippCyrena & Lee
Pondrom

Jane Taves

Debra Anken-Dyer &
Charles DyerAnn Lindsey
in memory of Chuck SnowdonSally & Mike
MileyJulie Ottum &
David RunstromAnd the many *Friends of Everlasting Faint***STUDIO ARTIST PROGRAM SPONSORED BY**

An Anonymous Friend

Mary Pikul Anderson

Frederic & Gail Tyszka

YOUTH ENGAGEMENT PROGRAMS SPONSORED BY

William A. & Joyce F. Wartmann Fund

Aileen & Paul Jensen Family

**The first workshop of *Everlasting Faint* was commissioned by
University Opera, UW-Madison, in 2023.**

Madison Opera celebrates the rich traditions, heritage, and culture that thrived long before our arrival. We respectfully recognize this Ho-Chunk land and affirm that we are better when we stand together.

Everlasting FAINT

Music by Scott Gendel
Libretto by Sandra Flores-Strand
World Premiere

CHARACTERS IN ORDER OF VOCAL APPEARANCE

Andy Jones	Oliver Thornburgh‡
Martha Jones	Emily Birsan
Dr. George Knapp	Alan Dunbar
Trout Shue	Andrew Bidlack
Mary Heaster	Katherine Pracht
Elva Heaster Shue	Tori Tedeschi Adams‡
1st Miner	George Abbott III
2nd Miner	Andy Ball
Allie Cutlip Shue	Madison Barrett†‡
Lucy Tritt Shue	Alexandra Burch†‡
John Preston	Matthew Treviño‡
David Gassaway	Ryan Nash†
Gregory Snodegar	Lifan Deng†
Judge	Ryan White
James Gardner	Robert A. Goderich
A Juror	Andrew F. Turner
Conductor	Stephanie Rhodes Russell
Stage Director / Dramaturg	Keturah Stickann
Scenic Designer	Court Watson‡
Costume Designer	Karen Brown-Larimore
Lighting Designer	Matt Taylor
Wig and Make-up Designer	Jan Ross

† *Madison Opera Studio Artist*

‡ *Madison Opera Debut*

The performance will last approximately 2 hours 30 minutes, including one intermission.

Scenery and costumes constructed at the Madison Opera Scenic and Costume Shops.

A NOTE FROM THE COMPOSER

As soon as Sandra Flores-Strand told me the story of the Greenbrier Ghost, I knew I absolutely had to compose this opera! Sandra is a fantastic writing partner, and this subject called to me on so many levels. One of my biggest missions as a composer is to engage with issues of social justice while also making art that is accessible, satisfying to perform, and highly entertaining rather than unrelentingly traumatic. *Everlasting Faint* dives headlong into that idea, warmly embracing the audience with operatic joy while delivering the opera's message of believing women's stories and advocating for the voiceless.

I love that so many 21st century operas refuse to shy away from addressing the troubles of our world, and I especially adore the idea of doing so while embracing the biggest strengths of this art form: the vivid dramatic arcs, emotional directness, and soaring vocal melodies that have led centuries of audiences to fall in love with opera.

Everlasting Faint is a culmination of this joyful approach, and I am endlessly grateful to Madison Opera for believing in this piece and working with me to bring it here to its premiere in the Capitol Theater.

- Scott Gendel, composer of *Everlasting Faint*



Scott Gendel with the *Everlasting Faint* company at the first rehearsal at the Madison Opera Center, January 24, 2026.

Dear Friends,

On behalf of Madison Opera's Board of Trustees, I am thrilled to welcome you to the second production of Madison Opera's 2025/26 season, the world premiere of a new opera, *Everlasting Faint*.

Everlasting Faint is a true crime drama and ghost story composed by Madison's very own Scott Gendel with libretto by Sandra Flores-Strand. It is the story of Elva Heaster Shue, whose 1897 death the coroner hastily deems to be the result of an "everlasting faint," which at the time was a dismissive diagnosis for women's unexplained deaths. Soon thereafter, Elva's mother Mary is visited by her daughter's ghost, then the ghosts of other women who had been married to Elva's husband, Trout Shue. Driven by truths uttered by the ghosts, Mary perseveres through layers of bias in cases involving crimes against women to bring Trout to trial and win justice.



Blending the harmonic language of 21st century opera with elements of Appalachian folk music, *Everlasting Faint* presents a narrative transcending time that sheds light upon the enduring issue of domestic violence. Its title reflects lasting dismissive attitudes toward the murder of women and the opera explores themes of breaking silence, pursuit of justice, advocacy, determination, and hope. Its creators intended *Everlasting Faint* to be a call to action to advocate for the voiceless and stand against abuse. Their music and storytelling takes us on a journey finding a way through the darkness to a place of truth, light, and hope.

Presenting this world premiere is a celebration of artistic innovation and a commitment to the vitality of opera as an art form. This world premiere extends Madison Opera's nationally-recognized reputation as a home for new operas. In 1993, Madison Opera commissioned and presented *Shining Brow*, which concerns the life of Frank Lloyd Wright. Madison Opera was among the very first companies to present the operas sung by children, *The Very Last Green Thing* (1995) and *The Thunder of Horses* (1997). Likewise, we were among the first companies in the United States to stage *Charlie Parker's Yardbird* (2017) and *Fellow Travelers* (2020).

Producing high-quality opera and contributing to the ongoing vitality of the art form is expensive and ticket sales fund only a fraction of the cost of presenting performances. Please consider visiting madisonopera.org and making a donation. Individual donors are our single greatest source of support and every bit helps.

Thank you for joining us for *Everlasting Faint* and I look forward to seeing you at *Così fan tutte* in April and again in July at *Opera in the Park*.

Best wishes,

A handwritten signature in black ink that reads "Susan Zaeske". The signature is fluid and cursive, with a long, sweeping underline.

Susan Zaeske
President, Madison Opera Board of Trustees

SOME GHOSTLY HISTORY



In October 1896, Elva Zona Heaster married blacksmith Edward Trout Shue in Greenbrier County, West Virginia, deep in the Appalachian mountains.

Elva Zona Heaster and Edward Trout Shue on their wedding day, October 1896.

Three months later, in January 1897, Elva (who went by Zona) was found dead in their home. The coroner ruled her death to be of natural causes, with no specific diagnosis given.



The Shue home where Elva's body was found.



Mary Jane Heaster

Not long after the funeral, **Mary Jane Heaster, Zona's mother, claimed that her daughter's ghost visited her several times,** telling her that her husband had killed her by breaking her neck.

Mary convinced the local prosecutor, John Preston, to look into her daughter's death. When Preston discovered the coroner had been prevented by Shue from making a complete examination of Zona's dead body, he ordered it to be exhumed. The subsequent autopsy found that Zona's neck had been broken.

Shue was tried for murder, found guilty, and sentenced to life in prison. He died a couple years later during an epidemic.

Zona is buried in Soule Chapel Methodist Cemetery in Greenbrier County, West Virginia, as are her parents.

Nearby is a plaque commemorating her as "The Greenbrier Ghost," noting that this is considered to be the only case where the testimony of a ghost helped convict a murderer.



Zona's grave; photo by Keturah Stickann

Dear Friends,

Opera is a living, breathing art form, constantly renewing itself. It exists in the moment, in classic works performed for younger generations, and in new works that tell new stories and join their predecessors in the operatic repertoire.

It is therefore an incredible honor to welcome you to the world premiere of *Everlasting Faint*, the first world premiere that Madison Opera has produced in 33 years, and a truly special moment in the company's 65 year history.



I was unfamiliar with the Greenbrier Ghost when I saw the workshop of *Everlasting Faint* at UW-Madison in 2023, with composer Scott Gendel at the piano, a student cast, and a chorus largely drawn from Madison Opera's own chorus. As Act I's ghostly trio drew to a close, I leant forward in my chair, feeling the pull of Scott's music and Sandra Flores-Strand's words. It is rare for me to have a visceral reaction to new opera, but when I do, I know that our audiences need to hear it, too. Within a few weeks, I had told Scott that I wanted Madison Opera to premiere the finished version of his opera.

Putting together this *Everlasting Faint* company was a pleasure, encompassing old friends and new. On this stage, you will find artists who have sung with the company in many operas, as well as ones debuting tonight. The incredible Madison Opera Chorus gives voice to the community of Greenbrier County, while the Madison Symphony Orchestra creates its sonic world in Scott's fantastic and varied orchestration.

The production is led by two amazing women, both returning to us: stage director Keturah Stickann and conductor Stephanie Rhodes Russell. Keturah's brilliant vision for this story has brought the characters and their emotional realities to vivid life, while Stephanie Rhodes Russell has elicited and taken command of the musical sweep and complexity of this new score.

I am so grateful to everyone who supported *Everlasting Faint* financially, making sure this opera got heard. Madison Opera creates opera that is of and for its community, and we thrive because of all of you - in the audience, onstage, and backstage.

I want to pay special credit to Sandra and Scott for creating an opera that gives voice to women, and in particular to three women - Elva, Lucy, and Allie - whose voices were extinguished too soon, and to one woman, Mary Jane Heaster, who fought for justice against all odds.

As Sandra writes in the final lines of the opera, "the future holds hope." Thank you for being part of this special weekend.

A handwritten signature in blue ink that reads "Kathy".

Kathryn Smith, General Director

THE STORY OF *EVERLASTING FAINT*

Greenbrier County, West Virginia, 1897

ACT I

Eleven year-old Andy Jones, upon entering the house of his neighbors, the Shues, screams out in horror.

His mother Martha mourns the loss of her neighbor, Elva Heaster Shue. Dr. Knapp arrives to examine Elva's body. Martha tells him that Elva's husband Trout is grief-stricken and acting unusual. Dr. Knapp attempts to examine Elva, but an emotional Trout won't leave him alone with the body. Feeling uneasy, Dr. Knapp attributes Elva's death to an "everlasting faint."

After Elva's funeral, Martha visits Mary, Elva's mother, and gives her the white scarf that was wrapped around Elva's neck. The two women discuss Trout's troubling behavior during the funeral, when he wouldn't let anyone near the coffin. Mary believes Trout was responsible for Elva's death.

After Martha leaves, Mary notices a spot on the scarf. She attempts to clean it off, but the water runs blood red. She hears a familiar voice, then Elva's ghost appears, calls out to her for help, and vanishes. Mary reflects on how women die at the hands of men.

Mary confronts Dr. Knapp in his office, asking him for more details about Elva's death. He assures her that his cause of death was correct and dismisses her concerns as grief. When he leaves to help another patient, Mary reads his ledger, finding his entry about that night. Elva appears and reveals more details about her death. When Dr. Knapp returns, Mary tells him that she knows that he never examined Elva's body, because Elva's ghost told her he would have seen marks. He admits that Trout did not allow him to do a thorough examination and agrees to exhume the body if Mary can have the case reopened.

Martha sits alone in her home and prays. Simultaneously, Mary says her evening prayers, thanking God for the miracle of Elva's visits. Elva appears with the ghosts of two other women, Allie and Lucy, who detail how they were each married to Trout Shue - and were each killed by him. Mary promises that she will find justice and all four vow that Trout will pay for his crimes.

INTERMISSION

ACT II

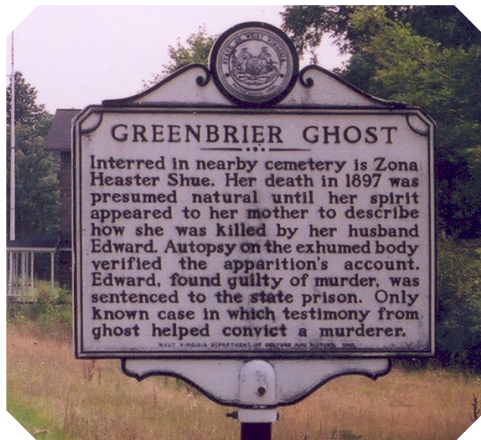
Mary visits the prosecutor, John Preston, and asks him to investigate Elva's death. Preston insists that the story of Elva's ghostly visits will weaken their case. When Mary tells him that Dr. Knapp admitted he had not examined Elva's body, Preston agrees to order an exhumation.

In a tavern, Trout and his companions drown away their sorrows. Preston arrives and tells Trout about his visit with Mary and the forthcoming exhumation of Elva's body. Trout insists that he wants to leave the past behind and move on with his life. Preston serves him with a court order requiring him to be present at the exhumation.

An autopsy is held at Dr. Knapp's office. As Mary looks on in distress, Elva appears to comfort her. Dr. Knapp finds marks on Elva's throat: her windpipe is crushed and her neck is dislocated, just as Mary had said. Trout is arrested.

In the courtroom, Preston questions Trout, who dismisses Mary as a nagging mother-in-law who never liked him. Mary testifies next, and Trout's lawyer, Mr. Gardner, tries to discredit her by mentioning her ghost stories. Mary assures him that the ghost's visits were a gift from God. The attorneys give their closing arguments. As the jurors file out, Mary and Martha pray, and Elva, Allie, and Lucy appear. The jury finds Trout guilty of murder. Mary rejoices that Elva has finally received justice.

Breaking character, the entire ensemble reflects on the many crimes and injustices against women, remembering those affected, acknowledging their pain, and hoping for a better future.



Historical marker located near the cemetery where Elva Zona Heaster Shue is buried.

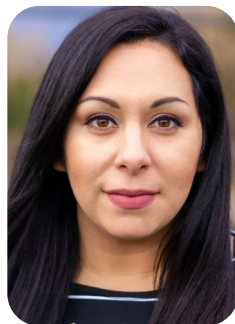
MEET THE CREATORS

SCOTT GENDEL Composer



Scott Gendel is a composer, pianist, vocal coach, orchestrator, rock musician, singer, composition teacher, theatrical music director, and musical generalist from Madison, Wisconsin. As a composer, Scott is particularly accomplished in all things involving voices. He has been commissioned by individual singers including Karen Slack and Julia Faulkner, along with ensembles such as C4: The Choral Composer-Conductor Collective, the Madison Symphony Orchestra, and Sparks & Wiry Cries. Scott's music has been recorded by cellist Yo-Yo Ma, the Santa Clara Chorale, San Jose Chamber Orchestra, and the Madison Choral Project, among many others. Performances of Scott's works have been featured at the Lyric Opera of Chicago and the Ravinia Festival, and his creative arrangements of Spanish-language carols have been performed by orchestras around the country. As a performing musician, Scott is the official pianist and principal vocal coach for Madison Opera, frequently collaborates on vocal and instrumental recitals both live and on recording, plays and sings in bands ranging from salsa music to experimental rock, and is Music Director for Opera for the Young. Scott's previous operas include *Super Storm*, which has toured to nearly 200 elementary schools around the Midwest, and *Barnaby's Gift*, a two-person opera for soprano and clown. Please visit www.scottgendel.com for more information about Scott and his projects.

SANDRA FLORES-STRAND Librettist



Sandra Flores-Strand is based in the Southwestern U.S. She writes on a variety of topics, but feels compelled to tell stories with a focus on marginalized communities. Sandra has an extensive background in classical singing, opera performance, and theatrical production, with credits in the U.S., Canada, and Europe. She studied libretto writing in workshops with American Lyric Theatre, Maestra Music, and Really Spicy Opera. Recent performances include a workshop of her opera *La Alcaidesa* with composer Laura Jobin-Acosta at OPERA America; her musical *Liana* with composer Maxim Tsvetov at NYC Fringe Festival; and her one-act opera *COVID Bake-Off* with composer Monica Chew at the San Francisco Old First Concert Series. Additional works have been featured by the Arizona Commission on the Arts, the Arizona Women's Collaborative, and Really Spicy Opera. Projects in progress include a children's opera about the Sonoran Desert, her concert work *Cantata for the Asylum Seeker*, and a commission for soprano Sara Pearson with composer Stefania De Kenessey. Sandra resides in Arizona with her husband Jeffrey, their son, and two cats, and when not writing opera Sandra and her husband run a nationwide music event company.

MEET THE ARTISTS



GEORGE ABBOTT III - 1st Miner

Hometown: San Antonio, TX

Madison Opera Debut: Inmate #3, *Dead Man Walking* (2014)

Recently at MO: Ensemble, *María de Buenos Aires*; An Alchemist, *Candide*; Ensemble, *The Anonymous Lover*; 3rd Jew, *Salome*

Recently: Tamino, *Queen of the Night*; Sorcerer, *Rinaldo*; Opera in the Gardens; Opera on the Point (Fresco Opera); DF and Romantic Fish, *Fish Fry* (Fresco Opera, Tapit / New Works)



TORI TEDESCHI ADAMS - Elva Heaster Shue

Hometown: Minneapolis, MN

Madison Opera Debut

Recently: Susanna, *The Marriage of Figaro* (Opera Las Vegas, CCM Opera); Frasquita, *Carmen* (Sioux City Symphony Orchestra); Giannetta, *The Elixir of Love* (Opera Modesto); Liesl, *The Sound of Music* (Houston Grand Opera, Glimmerglass Festival); Ritchie / Angelica, *The Hours* (Cincinnati Opera / Opera Fusion workshop)

Upcoming: Clorinda, *Cinderella* (Salt Marsh Opera), Susanna (cover), *The Marriage of Figaro* (Central City Opera)



ANDY BALL - 2nd Miner

Hometown: Ann Arbor, MI

Madison Opera Debut: Inmate #5, *Dead Man Walking* (2014)

Recently at MO: A Sergeant, *La Bohème*; A Doctor, *Candide*

Join Us Next Month for MADISON OPERA STUDIO ARTISTS IN RECITAL

Madison Opera's Studio Artists are four exciting young singers who serve as the company's musical ambassadors, performing around the community throughout the season.

All four have featured roles in *Everlasting Faint*, and next month you can hear them in free recitals.

Join them for an hour-long program of arias and duets by Mozart, Bizet, Puccini, Berlioz, Sondheim, Brahms, and more.

March 5 at 7pm | Oakwood Village (West)

March 6 at 7pm | Capitol Lakes



Studio Artists Alexandra Burch, Madison Barrett, Lifan Deng, and Ryan Nash, with Scott Gendel

More information at madisonopera.org

Don't miss *Everlasting Faint* on Wisconsin Public Radio!

Madison Opera continues our longstanding partnership with Wisconsin Public Radio with a broadcast of *Everlasting Faint* later this spring, along with Madison Opera's productions of *La Bohème* and *Così fan tutte*.

Check the Madison Opera and WPR websites and social media in spring for the exact dates and times.

Thank you to everyone who supports Madison Opera and Wisconsin Public Radio for making it possible for our productions to be heard around the state and the world.



**WISCONSIN
PUBLIC RADIO**

MEET THE ARTISTS



MADISON BARRETT - Allie Cutlip Shue

Hometown: Oviedo, FL

Madison Opera Debut

Madison Opera Studio Artist

Recently: Suzanne, *Hello Girls* (Four Seasons Theatre); Desiree, *A Little Night Music*; Songbird, *Songbird*; Margaret, *The Light in the Piazza* (UW-Madison); Lady Jacqueline, *Me and My Girl*; Ilene Cavanaugh, *The Arcadians*; Smitty, *How to Succeed in Business Without Really Trying*; Flora, *No, No, Nanette* (Ohio Light Opera); Soloist, *Sondheim on Sondheim* (Middleton Player's Theatre)

Upcoming: Mahler's *Rückert-Lieder* (Middleton Community Orchestra)



ANDREW BIDLACK - Trout Shue

Hometown: Baltimore, MD

Madison Opera Debut: Tamino, *The Magic Flute* (2017)

Recently at MO: *Opera in the Park 2025*; Steven Kodaly, *She Loves Me*

Recently: Edmondo, *Manon Lescaut* (Washington Concert Opera); Remendado, *Carmen*; Comte de Gloria-Cassis, *Les Brigands*; Sichel, *Doktor und Apotheker*; First Vagabond, *Die Kluge* (Oper Frankfurt); Doctor, *The Diving Bell and the Butterfly* (Dallas Opera); Lyonnel, *Le Roi Arthus* (Tiroler Festspiele Erl, Bard SummerScape); Rob Hall, *Everest* (The Barbican Center); Young Gypsy, *Aleko*; Paolo, *Francesca da Rimini* (Odyssey Opera)

Upcoming: Tony, *West Side Story* (Kalamazoo Symphony)



EMILY BIRSAN - Martha Jones

Hometown: Chicago, IL

Madison Opera Debut: Barbarina, *The Marriage of Figaro* (2011)

Recently at MO: Rusalka, *Rusalka*; Juliet, *Romeo and Juliet*; *Opera in the Park 2016*; Musetta, *La Bohème*

Recently: Speranza Celeste, *Ester*; Asteria, *Tamerlano* (Haymarket Opera Company); Italian Singer, *Capriccio* (Edinburgh International Festival); Poulenc's *Gloria* (La Crosse Symphony, Champaign-Urbana Symphony); *Carmina Burana* (New Philharmonic Orchestra); Handel's *Messiah*; Brahms' *Ein Deutsches Requiem* (Apollo Chorus Chicago)

Upcoming: Semele, *La Semele* (Haymarket Opera Company)

MEET THE ARTISTS



ALEXANDRA BURCH - Lucy Tritt Shue

Hometown: La Crosse, WI

Madison Opera Debut

Madison Opera Studio Artist

Recently: *The Governess*, *The Turn of the Screw*; *Lucinda*, *Dark Sisters* (DePaul University Opera); *Chorus*, *Carmina Burana* (Lyric Opera of Chicago); *Daughter*, *The Pirates of Penzance* (Gilbert & Sullivan Opera Company of Chicago); *Lucia*, *Lucia di Lammermoor*; *Fiorilla*, *Il turco in Italia* (Musica nelle Marche Opera Scenes)

Upcoming: *Mimi* (cover), *La Bohème* (Opera Festival of Chicago)



LIFAN DENG - Gregory Snodegar

Hometown: Shenzhen, China

Madison Opera Debut: *Fiorello*, *The Barber of Seville* (2024)

Recently at MO: *Schaunard*, *La Bohème*; *Masetto*, *Don Giovanni*
Madison Opera Studio Artist

Recently: *Sergeant*, *La Bohème*; *Marco*, *Gianni Schicchi* (Opera Company of Middlebury); *Papageno*, *The Magic Flute* (Opera for the Young); *Musiklehrer*, *Ariadne auf Naxos*; *Schaunard*, *La Bohème* (Chicago Summer Opera)

Upcoming: *Guglielmo*, *Così fan tutte* (Atchley Opera); *Bill Corey*, *The Elixir of Love* (Opera for the Young)



ALAN DUNBAR - Dr. George Knapp

Hometown: Winona, MN

Madison Opera Debut: *Alidoro*, *Cinderella* (2012)

Recently at MO: *Dr. Pangloss / Martin*, *Candide*; *1st Nazarene*, *Salome*; *Sipos*, *She Loves Me*; *Sen. McCarthy / Interrogator / Frank*, *Fellow Travelers*; *Papageno*, *The Magic Flute*; *Owen Hart*, *Dead Man Walking*

Recently: *Bach's Christmas Oratorio* (Bach Society of Minnesota); *Bach's St. Matthew Passion* (Madison Bach Musicians); *Emergency Haying* (UNI New Music Festival; Winona Symphony Orchestra)

Upcoming: *Gendel's For the Trees* (world premiere)

MEET THE ARTISTS



ROBERT A. GODERICH - James Gardner

Hometown: Deer Lodge, MT

Madison Opera Debut: Amelia's Servant, *A Masked Ball* (2012)

Recently at MO: Governor of Buenos Aires, *Candide*; Father, *The Seven Deadly Sins*; 1st Jew, *Salome*; John Styx, *Orpheus in the Underworld*; Beppe, *Pagliacci*; Pirelli, *Sweeney Todd*

Recently: Sam Byck, *Assassins*; Martini, *It's a Wonderful Life: A New Musical* (Capital City Theatre); The Escapologist, *Matilda*; Featured Singer, *Taste of Broadway* (Children's Theater of Madison); Pirelli, *Sweeney Todd* (San Francisco Opera)

Upcoming: Featured Chorus, *Between the Acts*, *Classical Works by Broadway's Greatest Composers* (Capital City Theatre)



RYAN NASH - David Cassaway

Hometown: Longmeadow, MA

Madison Opera Debut: Sergeant, *The Barber of Seville* (2024)

Recently at MO: Parpignol, *La Bohème*
Madison Opera Studio Artist

Recently: 1st Knight, *Once Upon a Mattress* (Central City Opera); Tamino, *The Magic Flute* (Opera for the Young); Gherardo, *Gianni Schicchi* (American Gothic Performing Arts Festival); Frederic, *The Pirates of Penzance* (Madison Savoyards); Albert Herring, *Albert Herring* (UW-Madison)

Upcoming: Sam, *The Ballad of Baby Doe* (Central City Opera)



KATHERINE PRACHT - Mary Heaster

Hometown: Davenport, IA

Madison Opera Debut: Countess Charlotte Malcolm, *A Little Night Music* (2019)

Recently: Commanding Officer's Wife / Alto, *The Knock*; Anna Murrant, *Street Scene* (Central City Opera); Mary Johnson, *Fellow Travelers* (Virginia Opera); Helen, *February*; Madeline Mitchell, *Three Decembers* (Opera on the Avalon); Cornelia, *Giulio Cesare*; Elizabeth Cree, *Elizabeth Cree* (West Edge Opera); Miss Jessel, *The Turn of the Screw* (IlluminArts); Horatio, *Hamlet* (State Opera Rousse, Bulgaria)

Upcoming: Verdi's *Requiem* (Tulsa Symphony)

MEET THE ARTISTS



OLIVER THORNBURGH - Andy Jones

Hometown: Sun Prairie, WI

Madison Opera Debut

School: Madison Country Day School

Recently: Soloist, *Best of Broadway Review*; The Joker, *Summer Camp* (Madison Country Day School)

Oliver plays the clarinet in his school band and takes private music lessons for piano and voice. He also enjoys volleyball, basketball, and singing with his sisters.



MATTHEW TREVIÑO - John Preston

Hometown: Harlingen, TX

Madison Opera Debut

Recently: Sparafucile, *Rigoletto* (Pacific Opera Victoria); Dr. Bartolo, *The Marriage of Figaro*; Dr. Grenvil, *La Traviata* (Calgary Opera); Dr. P., *The Man Who Mistook his Wife for a Hat* (Nashville Opera); Bonze, *Madama Butterfly*; Ferrando, *Il Trovatore* (Opéra de Montréal); Friar Laurent, *Romeo and Juliet*; Seneca, *The Coronation of Poppea* (Florentine Opera)



ANDREW F. TURNER - A Juror

Hometown: Madison, WI

Madison Opera Debut: Benvolio, *Romeo and Juliet* (2016)

Recently at MO: A Vendor, *La Bohème*; An Officer / An Inquisitor, *Candide*; A Vendor, *Florencia en el Amazonas*

MEET THE ARTISTS



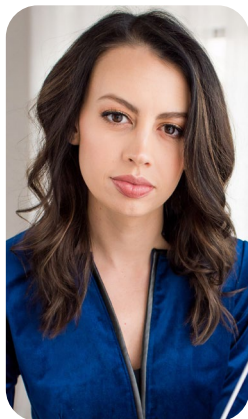
RYAN WHITE - Judge

Hometown: Milwaukee, WI

Madison Opera Debut: Quartet, *The Abduction from the Seraglio* (2018)

Recently at MO: An Officer, *La Bohème*; Jailor, *Tosca*; Cappadocian, *Salome*; An Inquisitor / Jesuit, *Candide*; Ensemble, *She Loves Me*, *The Anonymous Lover*

Recently: Narrator, *The Magic Flute*; Guglielmo, *Così fan tutte* (Brew City Opera)



STEPHANIE RHODES RUSSELL - Conductor

Hometown: American Fork, UT

Madison Opera Debut: *Opera in the Park 2021*

Recently at MO: *The Marriage of Figaro*

Recently: Resident Conductor, Fort Worth Symphony; *Hansel and Gretel*, *The Daughter of the Regiment* (Utah Opera); *Aida*, *Romeo and Juliet* (Arizona Opera); *Jungle Book*; *The Lion, the Unicorn, and Me* (Washington National Opera); *Eugene Onegin* (Rice University); *Don Giovanni* (Wolf Trap Opera); *The Knock* (Cincinnati Opera)

Upcoming: Beethoven's *Emperor Concerto* (Charlotte Symphony); *That Hellbound Train* (UNT Opera); *A Decade of Divas* (Opera Orlando)



KETURAH STICKANN - Stage Director / Dramaturg

Hometown: Columbia, MO

Madison Opera Debut: *Rusalka* (2019)

Recently at MO: *Salome*

Recently: *La Bohème* (Chautauqua Opera, San Diego Opera); *Stuck Elevator*, *La Traviata* (Knoxville Opera); Movement Director, *Moby-Dick* (Metropolitan Opera); *Carmen* (Knoxville Opera, Indiana University); *The Little Prince* (Resonance Works); *Hansel and Gretel* (Chautauqua Opera); *Samson and Dalila* (Opera Colorado); *Don Giovanni* (Minnesota Opera)

Upcoming: *Carmen* (San Diego Opera); *Mosé in Egitto* (Opera Southwest); *Romeo and Juliet* (Opera Theatre of St. Louis); *Rinaldo* (West Edge Opera)

MEET THE ARTISTS



KAREN BROWN-LARIMORE - Costume Designer

Hometown: Madison, WI

Madison Opera Debut: *The Elixir of Love* (1997)

Recently for MO: *María de Buenos Aires*, *The Anonymous Lover*, *Trouble in Tahiti / The Seven Deadly Sins*, *Orpheus in the Underworld*, *She Loves Me*

Recently: *Primary Trust* (Forward Theater); *The Fisherman's Daughters* (Milwaukee Repertory Theater); *Something in the Water* (Northern Sky Theater); *It's a Wonderful Life: A New Musical* (Capital City Theatre); *The Elixir of Love* (Opera for the Young)



LYNN KRYNICKI - Production Stage Manager

Hometown: Kirkland, WA

Madison Opera Debut: *Thunder of Horses* (1997)

Recently at MO: *María de Buenos Aires*, *Candide*, *The Anonymous Lover*, *Salome*

Recently: Bard SummerScape; Washington Concert Opera; John F. Kennedy Center for Performing Arts; Nouveau Productions

Upcoming: *The Egyptian Helen* (Bard SummerScape); *The Pearl Fishers*, *Idomeneo* (Washington Concert Opera)



JAN ROSS - Wig & Make-up Designer

Hometown: Madison, WI

Madison Opera Debut: *La Bohème* (1963)

Madison Opera Wig & Make-up Designer since 1992

Recently: University Opera, Four Seasons Theatre, Children's Theater of Madison, UW-Madison Band Show, Broadway at Overture



MATT TAYLOR - Lighting Designer

Hometown: Detroit, MI

Madison Opera Debut: *Candide* (2024)

Recently: *The Mountaintop* (Detroit Public Theatre); *Swan Lake*, *Sleeping Beauty* (Orlando Ballet); *Mr. Lincoln* (Ford's Theatre); *The Wizard of Oz* (Royal Caribbean Cruise Lines); *Pocket Symphony* (Complexions Contemporary Ballet)

Upcoming: *The 25th Annual Putnam County Spelling Bee* (Ford's Theatre); *Murder on the Links* (The Purple Rose); *The Great Gatsby* (Orlando Ballet)

MEET THE ARTISTS



COURT WATSON - Scenic Designer

Hometown: Chesapeake, VA

Madison Opera Debut

Recently: Set and Costume Designer, *Three Decembers*, *Die Walküre*, *Siegfried* (Virginia Opera); *Hänsel and Gretel*, *The Sound of Music*, *Jonny spielt auf* (Salzburger Landestheater); Costume Designer, *Rigoletto*, *La Bohème* (Wolf Trap Opera); Set Designer, *Hannah Senesh* (National Yiddish Theatre)

Upcoming: Costume Designer, *Lyle*, *Lyle Crocodile* (National Tour)

MADISON OPERA CHORUS

Scott Gendel, Chorus Master

SOPRANO

Jill Carlson
Megan Gloss
Katie Massey
Lynn Morgan
Julie Ottum
Alexandra Zulauf

MEZZO-SOPRANO

Lavonne Dettmers
Dale Kaufman
Maureen Kind
Beth Morgan
Laura Muller
Erin Selbee

TENOR

George Abbott III
Patrick Chounet
Scott Seyforth
Tyler Stone
Andrew F. Turner
Fred Younger

BARITONE/BASS

Andy Ball
Stan Hill
John Itson
Brian Schultz
Tom Stone
Ryan White

COVERS

Madison Barrett Mary Heaster
Alexandra Burch Elva Heaster Shue
Lifan Deng Dr. George Knapp
Ryan Nash Trout Shue

FEB 20-22

FRI & SAT 7:30 PM | SUN 2:30 PM

RACHEL BARTON PINE Returns!

Overture to A Midsummer Night's Dream is a decidedly playful overture by a very youthful Felix Mendelssohn (composed when he was just 17 years old). This sparkling work captures the magic of the fairy kingdom, the humor of the lovers' entanglements, and the grandeur of Theseus' court. Violinist Rachel Barton Pine returns to play Korngold's *Violin Concerto* — a lush and romantic work that glows with cinematic beauty and emotional depth — bridging the worlds of classical music, and Hollywood film scores. Debussy's *Prélude à l'après-midi d'un faune* is dreamlike music inspired by Stéphane Mallarmé's poem about a faun's sensual reverie, that paints a lush and languid musical landscape and a sense of wonder. Stravinsky's ballet *Petrushka* tells the story of a tragic puppet brought to life by a magician, set against the vibrant backdrop of a Russian fair. All four of these lively pieces of music will fill us with a lightness of being.

madisonsymphony.org/pinereturns

Be part of the experience.



RACHEL
BARTON PINE
Violin

TANIA MILLER
Guest Conductor

MUSIC



FELIX
MENDELSSOHN
*Overture to A Midsummer Night's
Dream, Op. 21*



ERICH WOLFGANG
KORNGOLD
*Violin Concerto in D Major,
Op. 35*



CLAUDE DEBUSSY
*Prélude à l'après-midi d'un faune
(Prelude to the Afternoon of a Faun)*



IGOR STRAVINSKY
Petrushka (1947 version)

PRESENTING SPONSOR
Pleasant T. Rowland Foundation

MAJOR SPONSORS
Madison Symphony Orchestra League
Peter and Leslie Overton
Cyrena and Lee Pondrom
Richman & Richman LLC

ADDITIONAL SPONSORS
Jane Hamblen and Robert F. Lemanske
Kenneth A. Lattman Foundation, Inc.
Ann Lindsey, in memory of Chuck Snowdon

Dates, artists, programs, and prices subject to change. *Prices include Sales Tax. Overture Center's per-ticket facility fee and Web/Phone fee for online or over-the-phone orders. To avoid the Web/Phone fee, purchase in-person at Overture Center's Box Office.



Single tickets (starting at \$22*) by phone (608) 258-4141,
in-person at the Overture Box Office, 201 State State Street,
online at madisonsymphony.org or overture.org.

MADISON SYMPHONY ORCHESTRA

John DeMain, Music Director

VIOLIN I

Suzanne Beia
Concertmaster
Leanne Kelso
Olga Pomolova
Maynie Bradley

CELLO

Karl Lavine
Mark Bridges

HORN

Linda Kimball
Ingrid Mullane

VIOLIN II

Hillary Hempel
Peter Miliczky
Holly Wagner
Rolf Wulfsberg

FLUTE

Linda Pereksta

PERCUSSION

Nicholas Bonaccio

VIOLA

Christopher Dozoryst
Katrín Talbot
Diedre Buckley

CLARINET

JJ Koh

GUITAR

Doug Brown

BASSOON

Cynthia Cameron

PIANO

Aubrie Jacobson

GENERAL MANAGER
Ann Bowen

PERSONNEL MANAGER
Alexis Carreon

LIBRARIAN
Jennifer Goldberg

STAGE MANAGER
Benjamin Skroch

ACKNOWLEDGEMENTS

American Players Theatre
Audio for the Arts
Carol Carlson
Children's Theater of Madison
Madison Ballet
Madison Concourse Hotel
and Governor's Club
David Durochik, Driftless Designs
Engelhart Motorsports
David Flanders & Susan Ecroyd

The Greenbrier Historical Society:
Dara Vance, Director
Karly Watts, Archivist
Jane Hughes, Researcher

Thomas Hirsch
Steven Klaus
Milwaukee Repertory Theater
David Ronis
UW-Madison Voice Program Students

UW-Madison Voice & Swallow Clinic
is the official voice care provider for Madison Opera.

Friends of Everlasting Faint

Bringing a world premiere to the stage is no small undertaking, requiring support beyond a traditional production. Madison Opera is immensely grateful to all of the *Friends of Everlasting Faint*, who made donations specifically to help bring this production to life.



Diane Adams
Tom & Betty Akagi
Maytee Aspuro & Tricia Noriega
Joel Balzun
Mark Brampton Smith
Tamara Brognano
Paul & Clio Bushland
Patrick Chounet & Tyler Stone
Hailey Cohen
Leanne Cordisco & Maureen Brady
Wayne & Diane Corey
Betty Harris Custer &
Corkey Custer
Lavonne C. Dettmers
David Flanders & Susan Ecroyd
Lynette Fons
Michael J. Googins
Tristan Golas
Yazid Gray
Lynn & Chad Hembel
Andrew Kaiser
Dale Kaufman
Andrew Kerber
Maureen Kind
Noël Marie & Steven Klapper
Fran Klos
Jill Krynicki & Steve Dutcher
Ashe Kuffner
John Lemke & Pamela Oliver
Patricia & Stephen Lucas
Peter & Jill Lundberg
Elizabeth Morgan
Jennifer Morgan

Charles Mueller
Tess Mulrooney
Connie Nelson
Casey Oelkers
Cyrena & Lee Pondrom
Katy Pracht & Keith Phares
Frances Rabalais
Elizabeth Rathke
Susan Rathke
Deborah Raymond
Matthew & Kara Ripley
David Ronis
Julia & Christopher Rottmayer
Josh Sanders
Sarah Scallon & Peter Kleinschmidt
Orange Schroeder
Jim & Jessica Schwefel
Kathryn Smith
Marilyn Smith
Reeves Smith
Andrew Stenson
Jane Taves
Frederic & Gail Tyszka
Rob Vandersteen,
The Red Hot Horn Dawgs
Gretchen Viney
Janine M. Wardale
Heidi Wilde
Rolf & Susan Wulfsberg
Mark Wurzelbacher
Susan M. Zaeske
Lorraine Zeller-Agostino &
Christopher Agostino

PRODUCTION PERSONNEL

Director of Production	Jill Krynicki
Technical Director	Billy Larimore
Production Stage Manager	Lynn Krynicki
Assistant Stage Managers	Tracy Hofmann, Alyssa Pon-Franklin
Production Assistants	Cruz Alberto Flores, Shuhan Li
Principal Coach / Accompanist	Aubrie Jacobson
Chorus Accompanist	Joy Bauman, William Preston
Costume Crew	Ginnie Bessert, Brenna Budic, Laurie Everitt, Leslie Frank-Taylor, Tracey Lyons, Lucy Walaszek, Janine Wardale, Sharon White
Wig and Make-up Designer	Jan Ross
Wig and Make-up Crew	Evelyn Becker, Tamara Brown, Liz Rathke, Angela Spencer
Properties Director	Jolie Sarajian
Properties Crew Head	Susan Rathke
Properties Crew	Devon Brock-Montgomery, Kathy Dutcher, Elaine Staley
Supertitles Cue Head	William Preston
Preview Artist	Madison Barrett
Lightwalkers	Maytee Aspuro, Marja Barger, Mazi Dossa, Terri Gregory, Mariapia Lambert, Greg Sessler, Isabel Tonsfeldt, Harry Tschopik, Greg Wagner
Head Carpenter	Greg Silver
Shop Carpenter	Kevin Zimmer
Charge Artist	Katie Andreachi
Scenic Draughtsperson	Jonas Harrison
Lighting Coordinator & Assistant Lighting Designer	Spencer Lyons
Overture Center Director of Production	John Penisten
House Carpenter	Georgia Skoirchet
Head Electrician	Brian Weinkauff
Head Sound	Lucas Etten
Theater Technicians.....	Mike Allison, Patrick Bley, Jono de Leon, Davin Pickell, Tim Ross, Jim Schaefer, Zak Stowe, Karen Corbeill, Greg Silver, David Dewes
Photographer	Ross Zentner
Videographer	Harry Browne, WeatherGage Productions
Production Stage Crew	Members of IATSE 251



UNIVERSITY OPERA PRESENTS

OUR TOWN

MARCH 2026

20 21 22 24

7:30 PM 7:30 PM 2:00 PM 7:30 PM

Carol Rennebohm Auditorium – Music Hall

TICKETS



Jen Fenster

REALTOR®

608-215-3712

Jen@thewillsagency.com

THEWILLSAGENCY.COM

W THE WILLS
AGENCY
REAL ESTATE BROKERAGE

REAL ESTATE IN PERFECT HARMONY

Trusted guidance in buying,
selling, or investing.

Every detail is orchestrated
so your experience hits
all the right notes.

SEARCH SMARTER



Scan the QR code
to download our
app now!

Così fan tutte STUDENT MATINEE

Educators, are you interested in taking your class to see an opera? **The Student Matinee** of *Così fan tutte* on April 22 is open to school groups from across Wisconsin for a school-day performance of Mozart's sublime human comedy.

For any questions or further information, contact Chloe Agostino, Artistic Administrator, at agostino@madisonopera.org or 608-238-8085.



LET'S TALK OPERA!

Do you enjoy the pre-show talk? There are so many more ways we can talk about opera together, online and in person.

Opera Talk with Kathryn Smith is a free online dive into centuries of operatic history, thematic connections, and stories - plus cute animal photos. *The Art of Operatic Disguise* is upcoming on March 12; the full archive is available online.



Opera Up Close is a behind-the-scenes preview of each opera, including an artist roundtable, held at the Madison Opera Center the weekend before opening night.

Community Previews of our operas, including a performance by a Studio Artist, are given in retirement communities, and are free and open to the public.

Digital Previews of each opera are streamed online a month before the show, then remain available to watch whenever suits you.

Want to host a talk? If you would like someone to speak to your school or community group about opera, please contact us - we love to talk opera!

More information can be found at madisonopera.org.

An archive of Opera Talks and Digital Previews is available at [Youtube.com/MadisonOpera](https://www.youtube.com/MadisonOpera).

Benefits of Supporting Madison Opera

Your donation to Madison Opera helps bring theatrical magic to the stage, and we are honored to provide special benefits in gratitude.

Below are just some of our donor benefits; a full list can be found at madisonopera.org/support-us.

Enthusiast (\$250+): Invitation to annual Meet the Studio Artists Recital

Benefactor (\$500+): Invitation to annual backstage tour
Invitation to one Opening Night reception

Bronze Circle (\$1,500+): Reserved parking for MO performances
Invitations to all Opening Night receptions
Tickets to one final dress rehearsal

Silver Circle (\$3,000+): Tickets to all final dress rehearsals
Invitation to private summer party featuring *Opera in the Park* artists

Gold Circle (\$5,000+): Invitation to annual President's Dinner

Celebrating 28 years in Downtown Madison!

*Over 40 Single Malts - Bourbons and Ryes
Cognacs and Brandies - Craft Cocktails*

*Craft Beer
Unique Wines*

*Cigar and Pipe
Smoking Allowed*

Large Sidewalk Cafe



M A D U R 

117 East Main Street
Just off the Square
(608) 294-9371 open at 4pm



The Midwest's premier
piano restoration workshop.

Our experts have skillfully
rebuilt pianos for over 50 years.

Watch a piano restoration at
farleypianos.com/restoration

New & Used Pianos
Grands, Uprights, & Digitals
Tuning · Repairs
Rentals · Moving · Lessons



Madison, WI
farleypianos.com

Supporting Madison Opera is as easy as 1, 2, 3...

Madison Opera is a not-for-profit arts organization. Your tax-deductible contribution will help affirm our role in our area's rich cultural and economic climate, allowing us to continue to bring opera to full, glorious life in our community.

Here are three simple ways to make
a charitable donation to Madison Opera.

1

GIFTS OF CASH

Send a check to Madison Opera at 335 West Mifflin St., Madison, WI 53703; call us at 608-238-8085; or visit madisonopera.org. You can set up monthly credit card charges, spreading out your gift over the course of a year and accruing the benefits to your annual giving level.



2

GIFTS OF SECURITIES

Transfer stock or other securities directly from your brokerage account to ours. Please call or have your broker call the Madison Opera office for our account information.



3

IRA ROLLOVER GIFTS

If you are 70 ½ or older, you can make tax-free charitable gifts directly from your Individual Retirement Account to us.



Thank you!

*If you have any questions, please call 608-238-8085 or
email tolles@madisonopera.org.*

MADISON OPERA FOUNDATION

Established in 2001, the Madison Opera Foundation is an important part of Madison Opera's financial structure, overseeing several funds that help support the company's work, now and in generations to come.



The Madison Opera Endowment supports Madison Opera in perpetuity and provides an annual distribution.

The Reserve Fund is a "rainy day fund," offering stability by providing emergency capital in the event of the unexpected.

The Production Fund provides major support for selected operas.

The E. David Cronon Fund and the **Ann Stanke Fund** provide annual gifts to support opera productions.

The William J. and Joyce F. Wartmann Fund provides an annual gift to support youth appreciation, attendance, and participation in opera.

For more information on any of these funds, or if you are interested in creating a fund of your own, please contact Madison Opera at 608-238-8085.

BOARD OF DIRECTORS



Joyce Hirsch,
President

Fernando Alvarado
Martin Barrett

Larry Bechler
Sally Miley
Amy Nickles

J. Marshall Osborn
Thomas Terry
Susan Zaeske

CELEBRATING 25 YEARS
OF A MADISON SUMMER TRADITION

OPERA *in the* PARK 2026

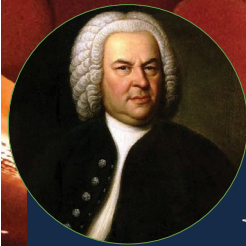
FREE Concert | Garner Park

JULY 18, 2026

Raindate July 19

Since 2002, Madison Opera has shared the joy of opera through Opera in the Park, our free gift to our community. Garner Park comes alive with music and light sticks, as soloists, the Madison Opera Chorus, and the Madison Symphony Orchestra perform selections from opera and musical theater.

Join us this summer as we launch a year-long celebration of 25 years of Opera in the Park. Get ready to share your memories, your photos, and your happiness as we honor the past and look forward to the future!



Bach — Mass in B minor

March 28, 2026 — 6:45 lecture, 7:30 concert

March 29, 2026 — 2:15 lecture, 3:00 concert

UW Hamel Music Center, Mead Witter Foundation Hall

Choir, Vocal Soloists, Baroque Orchestra

Andrew Megill, conductor

TICKETS: ONLINE, WILLY STREET CO-OP, ORANGE TREE IMPORTS & AT THE DOOR
Trevor Stephenson - ARTISTIC DIRECTOR Kangwon Kim - ASSISTANT ARTISTIC DIRECTOR

MADISONBACHMUSICIANS.ORG

Everlasting Faint

Congratulations Madison Opera!

on your

World Premiere of

Everlasting Faint

by Scott Gendel, composer,

and Sandra Flores-Strand, librettist.

We Love the Way You Sing!

Killdeer, a shorebird you can see without going to the beach. Killdeer are graceful plovers common to lawns, golf courses, athletic fields, and parking lots. These tawny birds run across the ground in spurts, stopping with a jolt every so often to check their progress, or to see if they've startled up any insect prey. Their voice, a far-carrying, excited *kill-deer*, is a common sound even after dark, often given in flight as the bird circles overhead on slender wings.



Wild Birds Unlimited
Nature Shop

8402 Old Sauk Rd.

*We Bring People
& Nature Together!®*



ANNUAL FUND DONORS

We thank the following individuals, corporations, foundations, and organizations for their generous gifts and contributions to the Madison Opera Annual Fund. This list includes gifts received between January 13, 2025 and January 13, 2026.

Thank you for your support!

GRAND CIRCLE (\$25,000 +)

An Anonymous Friend

Martin & Kay Barrett

Vivian Ruth Brigham

Martha & Charles Casey

W. Jerome Frautschi

Full Compass Systems

Gialamas Family Foundation

Aileen & Paul Jensen Family

Chun C. Lin

Susan & Jonathan Lipp

Patricia & Stephen Lucas

J. Marshall Osborn

Cyrena & Lee Pondrom

Pleasant T. Rowland Foundation

STANKE PLATINUM CIRCLE (\$10,000 +)

An Anonymous Friend

Diane Adams

Carla & Fernando Alvarado

Debra Anken-Dyer & Charles Dyer

Helen Baldwin

Bea & Lau Christensen

Paul & Susan Erickson

Steve Hurley & Sam Holben

Fran Klos

John Lemke & Pamela Oliver

Lynn & Gary Mecklenburg

Sally & Mike Miley

Nancy Mohs

Mary Mueller

Rick & Gail Nordheim

Kato & David Perlman

Raymond B. Preston Family Foundation

Ann Stanke Fund for Madison Opera

Jane Taves

Thomas E. Terry

Thompson Investment Management

University Research Park

William J. & Joyce F. Wartmann Fund

Heidi Wilde

Wisconsin Arts Board

Madison Opera makes every effort to be as accurate as possible in our donor lists.

However, if you should find a discrepancy in these listings or have a question, please contact the Development office at 608.238.8085.

ANNUAL FUND DONORS

JOHNSON GOLD CIRCLE (\$5,000 +)

Capitol Lakes
Linda Caprariello
Peyton Engel & Maureen Hart
Evjue Foundation
David Flanders & Susan Ecroyd
John J. Frautschi Family Foundation, Inc.
Walter A. & Dorothy Jones Frautschi
Charitable Unitrusts
Kathleen Harker
Susan Harris
Joyce & Thomas Hirsch
Connie Kinsella & Marc Eisen
Jun & Sandra Lee

Ann Lindsey
Madison Gas & Electric Co.
Sarah Nehls & Nick Agopian
Amy & Jerry Nickles
Julie A. Ottum & David Runstrom
Pamela Ploetz & John Henderson
Thomas & Margaret Pyle
Rajesh Rajaraman & Deepika Rajesh
Sharyn & Carl Stumpf
Frederic & Gail Tyszka
Toby Wallach
Susan M. Zaeske

SILVER CIRCLE (\$3,000 +)

Tom & Betty Akagi
Mary Pikul Anderson
Janneke & Richard Baske
Melinda Certain
Dennis & Lynn Christensen
Kathy Condit
Stephen & Shirley Crocker
Dane Arts
Robert & Linda Graebner
Bezalel & Betsy Haimson
Brandon S. Hayes

Maureen Kind
Peter & Jill Lundberg
Stephen D. Morton
Charles Mueller
John Northrop
Rodney Schreiner & Mark Blank
Henry Siegel
Jim & Jean Spilburg
Selma VanEyck
Urban Wemmerlöv & Mary Beth Schmalz
Fred Younger

BRONZE CIRCLE (\$1,500 +)

An Anonymous Friend
Nancy Marshall Bauer
Lawrence Bechler
Patricia Brady & Robert Smith
David Coe
Lavonne C. Dettmers
Joy H. Dohr
Eve Drury & Peter Beatty

Elizabeth Evanson
Tyrone & Janet Greive
Don & Sandra Griffin
Terry L. Haller
Kathy & Jim Herman
Sue Johnson
Janice Jones
Andrew Kaiser

Catherine Kestle
Voula Kodoyianni &
Tom Record
Jennifer & James Lattis
Bill & Fern Lawrence
Richard Leffler
Michael McArdle
Barbara Merz

BRONZE CIRCLE (\$1,500 +)

Linda M. Mintener &
Robert Jones

Elaine & Nicholas Mischler
Deane Mosher & Fran Fogerty
Daniel O'Brien
Kay & Pete Ogden
Nancy Rathke

John Ricca &
Christine Codding
Kathleen & Ronald Schell
Orange Schroeder
Kathryn Smith
Reeves Smith
Elliott & Norma Sober

Elaine M. Staley
Dawn Stiegert
Julie Swedarsky
Susan Thibeault & David Yang
Nick & Judy Topitzes
Glenn & Jane Watts

BENEFACTOR (\$500 +)

An Anonymous Friend
Gary Antoniewicz & Martha Taylor
Maytee Aspuro & Tricia Noriega
Mark Aulik
Lynn White Bach
Nancy Baillies & Kevin Gould
Charles & Elizabeth Barnhill
Chuck Bauer & Chuck Beckwith
Carolyn Bell
Dr. Annette Beyer-Mears
Diane Bless
Joyce E. & Daniel W. Bromley
Thomas L. Bruckner
Doug & Wendy Buehl
Larry & Mary Kay Burton
Paul & Clio Bushland
Margaret Butler & Dennis Lloyd
Tom & Patty Carroll Family
Leanne Cordisco & Maureen Brady
Richard W. Dexter
John & Deidre Dunn
Marilyn Ebben
Frederick Edelman
Royle Eenigenburg & Jantina Vonk
Karen Backes Felder & Jacob Felder
Wes & Ankie Foell
Anne-Marie Foltz
Rosalee Gander
George Gay
Jane Hamblen & Robert Lemanske

Bruce & Korinna Hansen
Diana Hess
Will Hickman
Courtney Hogendorn
Dave & Jean Johnsen
Stan & Nancy Johnson
Jerome & DeeDee Jones
Betty & Vance Kepley
Mooyoung Kim & Anna Myeong
Henry King
Noël Marie & Steven Klapper
Irwin Klibaner
Ivan & Milka Knezevic
Al Kohn & Shelley Marshall
David Lauth & Lindsey Thomas
Franzo Law II
Charles Leadholm
Richard & Judy Loveless
Annette Madsen White
Doug & Joan Maynard
Charles McLimans &
Richard Merrion
Patricia McQuiddy
Rolf & Judith Mjaanes
Jim & Pat Moore
Wendy Moore Skinner &
James Skinner
Tess Mulrooney
Genevieve Murtaugh
David Myers

David R. Paolone
Reynold V. Peterson
Evan & Jane Pizer
Michael Quietto
Elizabeth Rathke
Susan Rathke
Don & Carol Reeder
DeeDee Remeika
Ruth & Bela Sandor
Sally & Robert Schwarz
Jennifer & David Sereno
Everett & Tricia Smith
Marilyn Smith
Randy Smith & Sharon Metcalf
Ronald & Chris Sorkness
Millard & Barbara Susman
Harry Tschopik
John Unertl
Janet & Jack Waksman
Ann Wallace
Janine M. Wardale
Mona Wasow & Richard Brualdi
Richard Weeks
Michael Weiden
Paul Wertsch
Richard & Katie Yde
Sonja Yde
Donald Young
Dolores Zeeh

ANNUAL FUND DONORS

ENTHUSIAST (\$250 +)

An Anonymous Friend	Nancy Dodge & David Watts	Casey Oelkers
Kirsten Arndt-Hutson	Dave & Joy Drummond	James Ostrander
Andrew & Kelly Ball	Doris & Dick Dubielzig	Barbara Park
Joel & Kathryn Belaire	David Falk & JoAnne Robbins	Paul Patenaude & Peter Hoff
Niles & Linda Berman	Lynette Fons	Susan Riesch
Elizabeth Binhammer & Ellen Hartenbach	Susan French & Brian Driscoll	Matthew & Kara Ripley
Miriam & Brian Boegel	Wava Haney	Thomas Schirz & Kate Kvale
Marcia Bogolub & Phil Kaplan	Forrest Hartmann	Jim & Jessica Schwefel
Margaret Carrao	Melissa & Greg Hinz	Gail & Daniel Shea
Richard Chappell	Linda & Jeff Huttenburg	Victoria & Alan Sheldon
Evonna Cheetham	Margaret & Paul Irwin	Jackson Short
Patrick Chounet & Tyler Stone	Margaret Jacoby	Lori E. Smith
Stephen & Betty Cohen	Lee & Rosemary Jones	Tanya & Chuck Stone
Frederick Coleman	Laura Kearney	Rob Vandersteen
Hanna Cook-Wallace	Patricia Kokotailo & R. Lawrence DeRoo	Gretchen Viney
Stan & Debbie Cravens	Karen Johnson Kretschmann	Bill & Jacqueline Wineke
Betty Harris Custer & Corkey Custer	Jane Lewis & Paul Nelson	Rolf & Susan Wulfsberg
John Daane	Kathleen McElroy & David Newby	Jennifer Younger & Tom Smith
Susan De Groot Boucher & Joe Boucher	Kevin McKown & Nancy Fuller	William Zarwell & Robin Chapman
Geke de Vries	Gary Miller & Linda Cohn	Lorraine Zeller-Agostino & Christopher Agostino
	Elizabeth Morgan	
	Melissa Mulliken & Kim Turner	

PARTNER (UP TO \$249)

An Anonymous Friend	Jane Barnett	Barbara Copeland	Hailey Cohen
Eric Adelman	Laura Batzer	Buenger	Janis Cooper
Jekaterina Agaponova	Ronald Bauer	James & Charlotte Burns	Matthew Coppens
Erin Alberts	Ellis & Sue Bauman	Tre Bursnall	Rebecca & John Corbett
Rodrigo Alfaro	Andrea Becerra Montgomery	Carol Cameron & Russell Kumai	Wayne & Diane Corey
Glory Aliu	Patrick Becker	Ann Campbell	Louis Cornelius & Pris Boronic
Ellie Alldredge-Bell	Judee A. Bell	Deborah Cardinal & Walter Burt	David Cottingham
Dwight Allen	Prentice Berge	Carol Koby Carey	Craig Courtney
Ian Allen	James Berger	Dennis Carl	Brian Cowing
Dan Altschul	Kenneth Boldt	Gordon Carncross	Linda Crane
Rita Applebaum	Bruce Bosben	Madeleine Carpenter	Laurie & Bruce Cray
Doreen Arcus	Mary Bowman	Gabriela Cerghelean	Donita Croft
Jane Armstrong	Mark Brampton Smith	Colton Johnson Chase	Sally Ann Davis
Charlene Arner	Dorothy & Gurdip Brar	Janice & Mark Cis	Anthony DeGregoria
Marilyn Ash	Jeralyn Breunig	Caroline & Michael Clark	Paolo Desiati
Ralf Auer	Carol Brewer	Emma Clark	Sita Diehl
Jennell & Mark Ballering	Tamara Brognano	Martin & Lisa Cohen	Michael & Ulrike Dieterle
Joel Balzun	Toni Brown		Heather Dipko
Gale Barber			

PARTNER (UP TO \$249)

Rosemary M. Dorney	Peter Hanson	Nancy & Scott Lange	Diane Norback
Gloria Dougherty	Sarah Haug	Mary & Steve Langlie	Bob & Nancy Norcross
Holly Duck	Lynn & Chad Hembel	Harlan & Daun Larson	Maddie & Tim Norris
Jane Duffstein	Daniel Henricksen	Susana Lastarria-Cornhiel	Masaru Oka
Heidi Beth Elert	Steve Hirschfeld	Cory Lawson	Jon Marc Olivier
Rosemary Elliott	Emil Hoelzer	Kerri Lehman	Martha Olsen & Robert Nolan
Linda Fahy	Tracy Hoffman	Elsa Leverington	Bernie Pafford
Timothy Fehling	Lydie A. Hudson	Jennifer Linden	Allan & Patricia Patek
Heather Ferguson	Timothy Huegerich	Megan Lloyd	Meg Pekarske
Ted Finman & Jean Azemove	Barbara S. Hughes	Joe Loehnis	Jon Pennycuff
Cary Forest	Leslie Hutchins	Judith Louer	Elena Perevitskikh
Signe & John Frank	Mary Ireland	Kerry Ludke	Robert Pesselman & Gerri DiMaggio
Georgette Frazer	Catherine & Mark Isenberg	Mary & Eileen Maher	Roger & Linda Pettersen
Nancy Fredericks	Marco Izzia	Marjorie & Peter Marion	Anne Pinfold
Graham & Margaret Fuguitt	Joan Jacobson	Silvie Marlette	Julie Plass-Smith & Robert Smith
Debra Fuller	Juris Jaunkalniētis	Karen Matteoni & Daniel Lippitt	Douglas Poland
Greg & Clare Gadiant	Brandon & Sarah Jellison	Theresa McAweeney	Katy Pracht & Keith Phares
Katharine & William Gansner	Dennis Jolley	Maureen McCarty	Nathan Priegnitz
Michael George & Susan Gardels	Steve Kabe	Katherine McCoy	Adrian Przewdziecki
Barbara Gerloff	Tara Kadium	Andrew McVea	Frances Rabalais
Lucretia Ghasin	Jonathan Kane & Janet Mertz	Jeanne Meier	Loan & Brian Rathgeber
James Gill	Barbara Kashian-Snow	Scott Mellor	Deborah Raymond
Pam F. Gilmore	Christopher & Jane Kashnig	Julio Mereb	Joanne Rear
Cristel & Craig Gjerde	Dale Kaufman	Lori Merriam	William Reese & Carole Blemker
Charles Gleason	Andreas & Valerie Kazamias	Steve Meyer	Abdul Rehman
Edward & Sally Gleason	Andrew Kerber	Terry & Hans Moen	Joy & David Rice
Evan & Emily Gnam	Larry Kneeland	Kenneth Mohr & Reginald Emshoff	Mark Rickenbach
Tristan Golas	Daniel Knepper	Jennifer Morgan	Erin Rieser
Michael G. Goldsberry	Larry Knepper	William Morgan	John K. Rinehart
David Gonzalez	Daniel Knepper	J. Terence Morrison	Michelle Roatch
Michele Goolsbey	Lewis Koch	Nancy Motisi	David Ronis
Catherine Gove	Anna Kocharian	Karen Muench	Michael Ross & Kirsten Fruit
Paula Graf	Anna Kocharian	Karen Muench	Jacquelyn Rothstein
Ginny Graff	James & Janet Koloen	Mina & Pasupati Mukerjee	Julia & Christopher Rottmayer
Yazid Gray	James & Janet Koloen	Mina & Pasupati Mukerjee	Mary Moyer
Ei Terasawa Grilley	Jesse Koopman	Patricia Mullins	Robert & Nancy Rudd
Paul Gunther	Julie Kotschevar & Kenneth Hunzicker	Ann Murphy	Joseph Rundell
Magdalene Hagedorn	John & Teri Kremer	Anna M. Myklebus	Timothy Sailor
Chanda Halderman	Ann Kruger	Lynn Hallie Najem	
David & Kathy Haley	Chavonne Kruger	Susan Nawrocki	
Kristine E. Hanin	Jill Krynicki & Steve Dutcher	Connie Nelson	
	Emma Lai	Elliot Nichols	
	William Lancaster	Elliot Nichols	
		Vera Nigrin	
		Thomas Nikl	
		Rachel & Edward Niles	

ANNUAL FUND DONORS

PARTNER (UP TO \$249)

Joy Sample	Dan & Marcia Smith	Don & Joanna Thompson	Morning West
William Sandberg	Lanny & Kathy Smith	Elissa Tikalsky	Faye Whitaker
Josh Sanders	Mikki Smith	Roxana & Alex Tomovici	Carolyn White
Don & Barb Sanford	Mary Lange Sollinger	Marcia E. Topel	Ernst & Connie
Phillip Schneider	Square Wine Company	Andrea Turke	Wiegshauss
Jennifer Schomaker	Daniel Starosta	Elizabeth Tuttle	Eve Wilkie
Alvin Schubert	Jamie Steckelberg	Andrée & John Valley	Sally Wilmeth
Kelly Schubertfair	Douglas Steeber	Teri Venker	Matthew Winden
Brian Schultz & Allan Phillips	Vanna Steffan	Avery C. Vilbert	Wendy Wink
Frederica Schuster	William Steffenhagen	Angela Vitcenda	Brad Wolbert & Rebecca Karoff
Magdolna Sebestyen	Walter & Judy Stevenson	Liz Vowles	Janet Wood
Jim & Jean Shaw	Bryan Stewart	Jim Vriesacker	James Woods
Ruth Sheldon	Rochelle Stillman	Sarah Vroman	Jon Woods
Lucyna & Yoram Shenker	Elaine Strassburg	Katherine Warncke	Nancy Woods
Daryl Sherman	Vladimir Streltsov	Megan Weimer	Joseph Wright
Nan Sievert	Irina Stulova	Jamie Lee Weis	Mark Wurzelbacher
Sigma Alpha Iota Alumnae	McKinley Summ	Joyce Wells	Robert Wynn & Millie Jones
Mark Miller & Terry Sizer	Ulrika Swanson	Beth Wendt	Patricia Zarnikow
Meg Skinner	Stanley Peter	Ronald & Judy Wenger	Ronald Zerofsky
Janine Smiley	Szczepanowski	Janet Wesol	
	Rayla Temin	Kenneth West & Lisa Vogel West	
	Heather Theisen		

GIFTS HAVE BEEN MADE IN MEMORY OF:

Bert Adams	Paul Madsen	Dean Schroeder
Scot Cullen	Francesca Martin	Ann Stanke
Jim Ebben	Charles Mueller	Patricia Struck
Kennedy Gilchrist	Richard Nels	Daniel VanEyck
Stanley and Shirley Inhorn	William Owen	Margaret C. Winston
Roland and Arline Johnson	Etiennette Pillet	

GIFTS HAVE BEEN MADE IN HONOR OF:

Chloe Agostino	Fran Klos and Family	Kathryn Smith
Deb Anken-Dyer	John Lemke and Pamela Oliver	Tyler Stone and Patrick Chounet
John DeMain	Steve and Patti Lucas	Susan Zaeske
Jean Kizer	Madison Opera Board of Trustees	



Leave a lasting legacy through planned giving.
Together we can share the magic of opera with generations to come.

Since 1961, Madison Opera has shared the joy of opera through mainstage performances, *Opera in the Park*, programs for students, recitals, lectures, and beyond. Our work has grown and evolved over our lifetime, and we know it will continue to do so as our community and opera itself evolves.

Planned giving through your estate will help ensure this tradition of excellence into the future – and you don’t need to be a millionaire. For example, if your regular annual gift is \$1,000, a legacy gift of \$20,000 will ensure that Madison Opera continues to receive your support for years to come. Generations from now, you will still be helping us produce great opera, from classics like *La Bohème* to free concerts like *Opera in the Park*.

Legacy gifts can be made through a bequest of cash, securities, or a percentage of your estate; naming Madison Opera as a beneficiary of your IRA, retirement plan, or life insurance policy; or creating a charitable gift annuity. Your attorney or financial advisor can help you decide the best way to include us in your estate planning.

*For more information on legacy giving, please contact Beth Tolles
 at tolles@madisonopera.org or call 608-238-8085.*

THANK YOU TO THE MEMBERS OF THE ENCORE SOCIETY

- | | | | |
|------------------------|------------------------|-----------------------|------------------------|
| Anonymous Friends (2) | Robert & Paula | Joyce & Thomas Hirsch | Jan & Bob Ross |
| Carla & Fernando | Dinndorf | Steve Hurley & | Kathryn Smith |
| Alvarado | Marilyn Ebben | Sam Holben | Reeves Smith |
| Craig Argall | Peyton Engel & | Miriam E. Kerndt * | Elaine M. Staley |
| Martin & Kay Barrett | Maureen Hart | Noël Marie & | Jane Taves |
| Chuck Bauer & | John Englesby * | Steven Klapper | Gamber Tegtmeier * |
| Chuck Beckwith | Natalie & Christopher | Fran Klos | Thomas E. Terry |
| Nancy Becknell * | Falconer | Ann Lindsey | Nick & Judith Topitzes |
| Jack & Marian Bolz * | David Flanders & | Peter & Jill Lundberg | Katherine Voight * |
| Martha & Charles Casey | Susan Ecroyd | Barbara Merz | Jan Von Haden |
| Elizabeth Conklin | Brian Haltinner | Sally & Mike Miley | Ann Wallace |
| George & Ann Croal | Kathy & Jim Herman | Rick & Gail Nordheim | William J. Wartmann * |
| Jean Cronon | Aileen & Paul Jensen * | Kato & David Perlman | Elyn Williams * |
| John DeMain | Gordon & Linda | Rodney Pflaum * | Helen L. Wineke |
| | Johnson * | Nancy Rathke | Margaret C. Winston * |

*In remembrance

MAKE A NIGHT OF IT

The Madison Concourse Hotel is a proud supporter of the arts.



THE MADISON CONOURSE HOTEL

AND GOVERNOR'S CLUB

1 W Dayton St | Madison, WI 53703
800 356 8293
concoursehotel.com

If you or someone you know feels unsafe in a relationship, help is available at 608-251-4445, via text at 608-420-4638, or nationally at 1-800-799-SAFE and <https://www.thehotline.org/>.

Don't be silenced.

Our Voice and Swallow Clinic has an international reputation for excellence in the care of voice problems. We offer leading-edge technology, diagnostics and treatment for performers, singers and actors of all ages.

(608) 263-6190
uwhealth.org/voiceswallow

OL-1634549-23

UWHealth

STAFF

General Director	Kathryn Smith
Principal Conductor	John DeMain
Director of Production	Jill Krynicki
Director of Development	Lizabeth Tolles
Artistic Administrator	Chloe Agostino
Advancement Officer	Emily Fons
Patron Services Manager	Robert A. Goderich
Finance Officer	Brian Haltinner
Marketing Manager	Julia Simpson
Technical Director & Warehouse Coordinator	Billy Larimore
Music Assistant	Aubrie Jacobson

BOARD OF TRUSTEES

President	Susan Zaeske*
Chair	Thomas Terry*
Vice President	Viki Brigham*
Vice President	Jane Taves*
Treasurer	Larry Bechler*
Secretary	Leanne Cordisco*

Carla J. Alvarado
 Debra Anken-Dyer
 Martin Barrett*
 Martha Casey*
 Kathy Condit
 David Flanders
 Joyce Hirsch*
 Stephen Hurley

Connie Kinsella
 Fran Klos*
 Franzo Law II*
 Richard Leffler
 John Lemke
 Susan Lipp
 Patti Lucas
 Lynn Mecklenburg

Barbara Merz
 Sally Miley*
 J. Marshall Osborn*
 Cyrena Pondrom
 Susan Thibeault
 Selma VanEyck
 Toby Wallach
 Sonja Yde

ADVISORS

Fern Lawrence

Elaine Staley

Helen Wineke

**Executive Committee*

MADISON OPERA, INC.

335 W. Mifflin Street | Madison, WI 53703
 608.238.8085 | info@madisonopera.org

 MADISON OPERA

LOVE IS A GAME.
EVERYONE CHANGE PARTNERS.

Così fan tutte
BY W. A. MOZART



APRIL 24 & 26, 2026
OVERTURE HALL

TICKETS MAKE A GREAT VALENTINE'S GIFT!

608.258.4141 | madisonopera.org/COSI/