



MADISON OPERA



Opera in the Park

A Madison Summer Tradition
Saturday, July 25, 2015
8pm | Garner Park | Free Admission

THANK YOU
TO OUR
LEAD SPONSORS



SUPPORT OPERA IN THE PARK!



Support Opera in the Park and keep this Madison summer tradition a free community event.

While Opera in the Park is free to attend, it requires significant support to put on. We are so grateful to all our generous sponsors for making it possible to produce this concert every summer. Won't you join them in ensuring its future?

There are four easy ways to donate:

- 1. Text OPERA to 20222 to make a \$10 donation.***
- 2. Put a donation in one of the donation boxes at the volunteer tables around the park.**
- 3. Visit madisonopera.org to make a donation with your credit card.**
- 4. Call us at 608-238-8085 or just mail a donation to 335 W. Mifflin Street, Madison WI 53703.**

**On behalf of everyone onstage and in the park,
THANK YOU!**

***THE FINE PRINT:**

A one-time donation of \$10.00 will be added to your mobile phone bill or deducted from your prepaid balance. Donor must be 18+ and all donations must be authorized by the account holder (e.g. parents). By texting YES, the user agrees to the terms and conditions. All charges are billed by and payable to your mobile service provider. Service is available on most carriers. Donations are collected for the benefit of Madison Opera by the Mobile Giving Foundation and subject to the terms found at www.hmgf.org/t. Message and Data Rates May Apply. You can unsubscribe at any time by texting STOP to short code 20222; text HELP to 20222 for help. Donations are tax deductible. Your cell phone bill can act as a receipt, or a donation receipt can be printed here.

Madison Opera will not use your phone number for future SMS solicitation.

Selling The
LARGEST SELECTION
to **LOCAL MUSICIANS**
For Over 35 Years



View our huge selection of:
guitars, drums, keyboards, amps, microphones, lighting,
cameras, video equipment and so much more!

Just off the Beltline near West Towne Mall
9770 Silicon Prairie Pkwy
Madison, WI
800-356-5844
fullcompass.com



Connecting Community

A neighborhood of ideas,
entrepreneurship, and opportunity.

THE PARK

With its cutting edge facilities, URP is internationally recognized as a hub of technology and innovation.



MADISON

Consistently ranked in "best of" lists nationwide, Madison isn't just a great place to do business, it's a great place to live.



WISCONSIN

Wisconsin is known for its embrace of ingenuity and entrepreneurial spirit.



UW-MADISON

Minutes away from campus, URP is a proud partner of UW-Madison, a world-class research and technology institution.



Proud Partner of UW-Madison



**UNIVERSITY
RESEARCH PARKS**
UNIVERSITY OF WISCONSIN-MADISON

For over 30 years, URP has been connecting the communities of research and technology, government, and academia to advance innovation and entrepreneurship in Wisconsin and beyond.

universityresearchpark.org

**Thanks to Access
for more than 30 years of
providing critical health care
to our community.**



Improving health. Improving lives.

Proud supporter of:

Music that makes the heart sing.

BMO Harris Bank applauds the great work of
Madison Opera.





MAKE DREAMBANK A SPACE TO VISIT

FREE EVENTS | IN THE HEART OF MADISON | OPEN TO ALL



Hours of Inspiration

Mon.–Thurs. 9 am–8 pm,

Fri. 9 am–6 pm,

Sat. 9 am–4 pm,

Sun. 11 am–3 pm

One North Pinckney Street | Madison, WI 53703 | 608.286.3150 | amfam.com/dreambank



American Family Mutual Insurance Company, American Family Insurance Company,
6000 American Pkwy, Madison, WI 53783 ©2015 010618–6/15



WISCONSIN
PUBLIC RADIO

Information. Inspiration.

88.7 Madison | wpr.org

Wisconsin and the World.

Applause
Applause
Applause

For Opera in
the Park 2015!



Colony
BRANDS, INC.

Shop for a variety of products at:
Swisscolony.com or
Seventhavenue.com

Check out career opportunities:
Colonybrands.com



Real. Local. Radio.



Magic
98

Pat & Bob

News

Weather

Traffic

Community Events



Proud to support
Opera
 in the
Park



Wisconsin Bank & Trust strives to enhance the quality of life in our community. We are proud to support the arts, and prioritize providing a positive impact on all who live here.

WisconsinBankandTrust.com

MEMBER
 FDIC

arts & minds

ISTHMUS OF MADISON

Smart, original, timely content covering news, politics, arts, music, food, sports, shopping – and more – all integral to life in the capital region. We emphasize journalistic excellence and high quality design, along with a sharply honed instinct for local happenings, and the best events calendar in town.

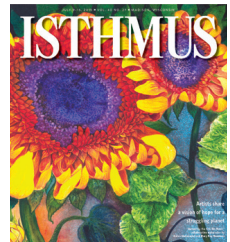
ALL YOURS, ALWAYS FREE



Isthmus ♦ 100 State Street ♦ Suite 301

Madison, Wisconsin 53703 ♦ 608.251.5627

WEB Isthmus.com ♦ FACEBOOK [IsthmusMadison](https://www.facebook.com/IsthmusMadison) ♦ TWITTER [@Isthmus](https://twitter.com/Isthmus)



MADISON OPERA IN THE COMMUNITY

In addition to presenting extraordinary opera at the Overture Center for the Arts and at Opera in the Park, Madison Opera is active throughout the community. Here are a few highlights of our engagement programs for adults and youth.

Student Matinees

For over four decades, students from around our region have attended fully-staged opera performances. This year, over 2,000 students will enjoy matinees of *La Bohème* and *Little Women*.

The High School Apprenticeship Program

A dozen high school students are chosen as apprentices every year. Throughout the season, they attend rehearsals, participate in workshops, have dinner with leading artists, and much more. Former Madison Opera High School Apprentices can be seen onstage in many of our operas.

A Night at the Opera with Big Brothers Big Sisters

Every year, a group of "Bigs" and "Littles" are treated to a private rehearsal, with a pizza party beforehand and a visit with one of our leading artists.

Angels at the Opera

Madison Opera partners with a number of non-profit organizations to provide complimentary tickets to our productions for their dedicated staff and volunteers.

Community Previews

Free previews are held during the year in public libraries and retirement communities around our region, bringing opera up close and personal to our neighborhoods.

For more information, visit madisonopera.org.

OPERA IN THE PARK IS TURNING 15 YEARS OLD NEXT SEASON!

On July 23, 2016, Madison Opera will celebrate our 15th annual Opera in the Park.

Opera in the Park began in 2002 with 4,000 people in attendance. It has since become Madison Opera's signature performance, reaching audiences of 15,000 people and serving as a true snapshot of summer in our region.

We are grateful to everyone who has attended Opera in the Park and to everyone who has supported it – including the many sponsors who have already committed to supporting the 15th anniversary in 2016.

We will be celebrating this milestone all year long, and you can help us. Send us your favorite stories about Opera in the Park – perhaps your favorite picnic basket items (or most disastrous ones) or your favorite performer. Use the hashtag #OITP2016 in your social media, or send memories to info@madisonopera.org.

And above all, save the date to celebrate Opera in the Park's 15th year:
July 23, 2016

Opera in the Park 2015 Sponsors



Tom and Nancy
Mohs



The Evjue Foundation, Inc.
The charitable arm of
The Capital Times



With promotional assistance from



Madison Opera appreciates the generous support and donations of:

Bucky's Portable Restrooms Inc., Capital City Tent Rental, City of Madison Parks Department

Opera in the Park Program

Eleni Calenos*, *soprano*
Meredith Arwady, *contralto*
Anna Laurenzo, *mezzo-soprano*

Harold Meers*, *tenor*
Kyle Ketelsen, *bass-baritone*
John DeMain, *conductor*

*Madison Opera Debut

Featuring the Madison Opera Chorus and the Madison Symphony Orchestra

Hosted by

Kathryn Smith, General Director of Madison Opera, and Brandon Taylor, WKOW-27

The concert will last approximately 2 hours, including one intermission

The Star-Spangled Banner Madison Opera Chorus & Madison Symphony Orchestra

Overture | *Ruslan and Lyudmila* (Glinka; 1842) Orchestra

Hence, Iris, Hence Away! | *Semele* (Handel; 1743) Ms. Arwady
Iris, messenger of the Gods, has told Juno about Semele's newly-built palace. Enraged, Juno swears to destroy her rival.

Mi Chiamano Mimi | *La Bohème* (Puccini; 1896) Ms. Calenos
Mimi tells the poet Rodolfo, who she has just met, about herself. She says that her name is Lucia, but she is called Mimi, and that she is a seamstress.

O Soave Fanciulla | *La Bohème* (Puccini; 1896) Ms. Calenos, Mr. Meers
Rodolfo tells Mimi how beautiful she is. He suggests they remain at home, but she asks to accompany him with his friends to the Café Momus. As they leave, they sing of their newfound love.

Ecco il Mondo | *Mefistofele* (Boito; 1868) Mr. Ketelsen
At the Witches' Sabbath on a mountaintop, Mefistofele declares his contempt for the world and all its inhabitants.

Ridda e Fuga Infernale | *Mefistofele* (Boito; 1868) Chorus
The chorus of witches continue their celebration.

Things Change, Jo | *Little Women* (Adamo; 1998) Ms. Laurenzo
Meg tries to explain to her sister Jo that her marriage to John Brooke is not a betrayal, but simply a natural evolution of life.

The Ballad of Kleinzach | *The Tales of Hoffmann* (Offenbach; 1881) Mr. Meers, Chorus
In a tavern, the poet Hoffmann entertains students with the legend of Kleinzach, an incredibly ugly man. Midway through, he begins to reminisce about a beautiful woman, before recalling where he is and finishing the song.

Trio | *The Tales of Hoffmann* (Offenbach; 1881) Ms. Arwady, Ms. Calenos, Mr. Ketelsen
The sinister Dr. Miracle summons the ghost of Antonia's mother to induce the young woman to sing until she dies.

Opera in the Park Program

~ INTERMISSION ~

Le Veau d'Or | Faust (Gounod; 1859)

Mr. Ketelsen, Chorus

Méphistophélès appears in the midst of a village celebration and sings about the greed of humankind, saying that Satan is behind it all.

Printemps Qui Commence | Samson et Dalila (Saint-Saëns; 1877)

Ms. Arwady

Dalila tells Samson that spring is blossoming all around her, yet in her heart, she feels like it is still winter.

Quando le Sere al Placido | Luisa Miller (Verdi; 1849)

Mr. Meers

Rodolfo has received a letter from Luisa saying that she never loved him. He is crushed and reminisces about the happy times they had together.

Song to the Moon | Rusalka (Dvořák; 1901)

Ms. Calenos

The water sprite Rusalka has fallen in love with a human prince. She cannot communicate with him, so she asks the moon to tell her love that she is thinking of him.

One Alone | The Desert Song (Romberg; 1926)

Mr. Meers, Chorus

The Red Shadow, a Frenchman in disguise to lead Moroccan freedom fighters, tells his colleagues his philosophy of love.

Wunderbar | Kiss Me, Kate (Porter; 1948)

Ms. Arwady, Mr. Ketelsen

Backstage in their dressing rooms, ex-spouses Fred and Lilli recall a Viennese operetta in which they appeared together, which featured "a waltz – something about a bar."

Till There Was You | The Music Man (Wilson; 1957)

Ms. Calenos

Small-town librarian Marian Paroo tells Harold Hill what a difference he has made in her life.

Luck, Be a Lady | Guys and Dolls (Loesser; 1950)

Mr. Ketelsen, Chorus

Gambler Sky Masterson has placed a major bet: if he loses a throw of the dice, he will pay each gambler \$1,000; if he wins, they help him fulfill a promise to the woman he loves. He calls upon Lady Luck to stay with him.

One Hundred Easy Ways to Lose a Man | Wonderful Town (Bernstein; 1953)

Ms. Arwady

Noting her sister's magnetic appeal to men, Ruth ruefully explains that she is so good at repelling men that she could write a best-seller entitled One Hundred Easy Ways to Lose a Man.

It's a Grand Night for Singing | State Fair (Rodgers; 1945)

Tutti, Chorus

At the Iowa State Fair, newly-met couples enjoy the evening dance.

Repertoire subject to change.



2015/16 SEASON

Writers and Their Inspirations

Words on a page. Music on a staff. Opera starts with these.

Hundreds of artists bring these works alive, from solo artists to production artisans, choristers, orchestra musicians, and more. Opera thrives because it is bigger than life, with passion and drama set to extraordinary music.





Madison Opera's 2015/16 season celebrates writers, whether they are inspired by a literal muse or a romantic one. From Rodolfo's poetry in *La Bohème* to Jo's dramatic fiction in *Little Women* and Hoffmann's stories in *The Tales of Hoffmann*, our writers and musicians offer a season that will thrill and move you.

Subscribe today and save!
See all three shows for as little as \$51.

Subscribers save up to 15% off single ticket prices, as well as saving up to \$25 in ticket fees over single tickets purchased through the Overture Center box office. Subscribe to all three shows for the greatest savings -- and the most enthralling year!



MADISON OPERA

Subscriptions: 608.238.8085 | madisonopera.org |    

Single tickets (on sale Sept. 4): 608.258.4141

La Bohème

Don't miss a word!

English translations are projected above the stage, ensuring that you can fully immerse yourself in these brilliant stories.

by *Giacomo Puccini*

NOVEMBER 13 & 15, 2015

Overture Hall

The greatest love story in opera, *La Bohème* remains eternally young. Set to a ravishing score, Puccini's classic opera tells of the lives, loves, and losses of a group of young artists in a Bohemian quarter of Paris.

Little Women

by *Mark Adamo*

FEBRUARY 5 & 7, 2016

Capitol Theater

Louisa May Alcott's beloved novel about four sisters in 1860s New England premiered as an opera in 1998 to instant acclaim. With moving arias, comic exchanges, and emotional confrontations, it is a showpiece for the young cast who portray the sisters and their suitors.

the Tales of Hoffmann

by *Jacques Offenbach*

APRIL 15 & 17, 2016

Overture Hall

As he sits in a tavern, the poet Hoffmann recounts the stories of his three loves: a doll, a singer, and a courtesan. His adventures take him from Munich to Venice, always accompanied by his most faithful love, his muse.

AMERICAN PLAYERS THEATRE

THE 2015 SEASON THROUGH NOVEMBER 22



on the HILL

The Merry Wives of
Windsor
By William Shakespeare

A Streetcar Named
Desire
By Tennessee Williams

Pride and Prejudice
Adapted by Joseph Hanreddy
and J.R. Sullivan
From the novel by Jane Austen

Private Lives
By Noël Coward

Othello
By William Shakespeare

in the TOUCHSTONE

An Iliad
By Lisa Peterson and
Denis O'Hare
Translated from Homer's *The Iliad* by
Robert Fagles

The Island
By Athol Fugard, John Kani
and Winston Ntshona

Edward Albee's
Seascape
By Edward Albee

OPENING IN NOVEMBER

The Game of Love
and Chance
By Marivaux
Translated by Stephen Wadsworth



"...THE BEST CLASSICAL THEATER COMPANY IN AMERICA"
- TERRY TEACHOUT, WALL STREET JOURNAL ARTS CRITIC

AMERICANPLAYERS.ORG  608.588.2361

OPERA IN THE PARK RAFFLE

Tickets are \$10 or 3 for \$25!

1st Prize: \$3,000

2nd Prize: \$1,500

3rd Prize: Opera Package*

** Includes Madison Opera 2015/16 season subscription for two,
plus a \$100 gift card to Food Fight Restaurants.*

Tickets are available for purchase at program tents and from select volunteers. Drawing is held at end of concert.

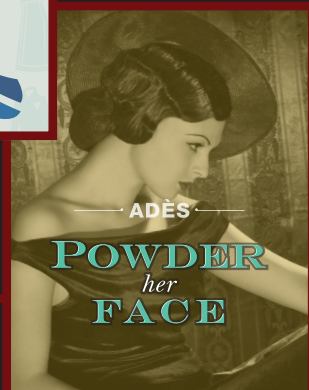
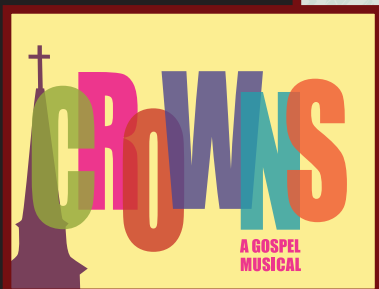
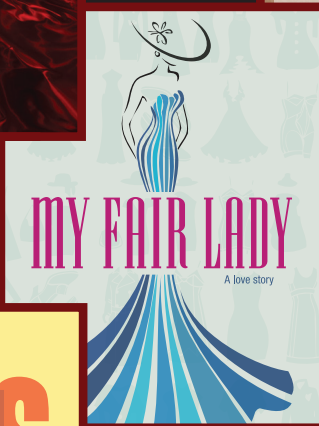
Enter to win, enter to support
Opera in the Park!



Need not be present to win. Lic# R0004750A-12931

**15/16
SEASON**

**SINGLE TICKETS
ON SALE NOW**



Skylight
music theatre

-A SEASON CELEBRATING WOMEN-

414.291.7800
skylightmusictheatre.org

TOSCA

September 25—October 11

MY FAIR LADY

November 20—December 27

POWDER HER FACE

January 29—February 14

CROWNS

March 4—March 26

**THE PIRATES OF
PENZANCE**

May 20—June 12

MEET THE ARTISTS



Meredith Arwady
Contralto

Madison Opera Debut: *Sweeney Todd*

Recently: Aunt Hannah, *Emmeline*; Mme. de Croissy, *Dialogues of the*

Carmelites; Kathy Hagen, *Champion* (Opera Theatre of St. Louis); Martha, *The Gospel According to the Other Mary* (English National Opera); Fräulein Krone, *The Impresario*; Death, *Le Rossignol* (Santa Fe Opera); Mistress Quickly, *Falstaff* (San Francisco Opera, Oper Frankfurt); Erda, *Das Rheingold*, *Siegfried* (Houston Grand Opera, Metropolitan Opera, Oper Frankfurt); Schwertleite, *Die Walküre* (Houston Grand Opera); Auntie, *Peter Grimes* (Aspen Music Festival)

Upcoming: Zita, *Gianni Schicchi* (Los Angeles Opera); Erda, *Siegfried*, *Das Rheingold* (Oper Frankfurt); First Norn, *Götterdämmerung*; Erda, *Siegfried* (Houston Grand Opera)



Eleni Calenos
Soprano

Madison Opera Debut

Recently: Cio-Cio San, *Madama Butterfly* (Ash Lawn Opera); Mimì, *La Bohème*; Antonia, *Les Contes d'Hoffmann*

(Palm Beach Opera); Lia, *L'Enfant Prodigue* (Metro Chamber Orchestra); Silvia, *Zanetto* (Odysseesey Opera); Liù, *Turandot* (Opera Company of Middlebury, Shreveport Opera); Micaëla, *Carmen* (Opera Idaho)

Upcoming: Mimì, *La Bohème* (Madison Opera); Micaëla, *Carmen* (Palm Beach Opera)



Kyle Ketelsen
Bass-Baritone

Madison Opera Debut: *Don Giovanni*

Also with MO: *Opera in the Park*, *Lucia di Lammermoor*, *Roméo et Juliette*, *Il Trovatore*

Recently: Escamillo, *Carmen* (Bayerische Staatsoper, Chorégies d'Orange, Minnesota Opera, Teatro dell'Opera di Roma, Metropolitan Opera); Somnus and Cadmus, *Semele* (BAM); Leporello, *Don Giovanni* (Canadian Opera Company, Lyric Opera of Chicago); Soloist, *Messiah* (Colorado Symphony, Mormon Tabernacle Choir); Figaro, *Le Nozze di Figaro* (Staatsoper Berlin)

Upcoming: Don Quixote, *Don Quixote* (Master Peter's Puppet Show); Zoroastro, *Orlando* (The English Concert); Don Basilio, *Il Barbiere di Siviglia* (Bayerische Staatsoper); The Four Villains, *Les Contes d'Hoffmann* (Oper Köln); Golaud, *Pelléas et Mélisande* (Zurich Opera); Figaro, *Le Nozze di Figaro* (Gran Teatre del Liceu)

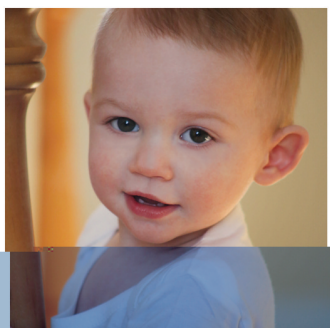
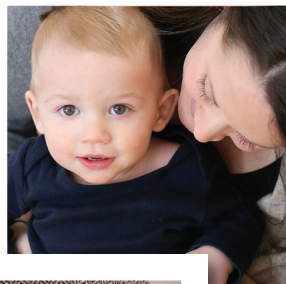
Let's Be Social!

Please tag us in your social media posts, using the hashtag #OITP.

Follow us on Twitter @madopera, Instagram Madison_Opera, or check in at the Madison Opera Facebook page.

#OITP

babies happen



High-quality affordable fertility care.

Call to schedule your private consultation - 608.824.0075

wiconsin fertility
INSTITUTE

David L. Olive M.D.

Elizabeth A. Pritts M.D.

Board-Certified: Advanced Gynecologic Surgery and Reproductive
Endocrinology & Infertility

www.wiconsinfertility.com • 3146 Deming Way, Middleton

MEET THE ARTISTS



Anna Laurenzo

Mezzo-Soprano

Madison Opera

Debut: Overture
Center 10th
Anniversary

Recently: Studio
Artist (Madison

Opera); *Pedrillo, Don Quixote* (Haymarket
Opera Company); *Isabella, L'Italiana in
Algeri*; *Filipyevna, Eugene Onegin* (Seagle
Music Colony)

Upcoming: *Ruth, The Pirates of Penzance*
(Performance Santa Fe); *Undertaker, Buried
Alive*; *GPS, Embedded*; Studio Artist (Fort
Worth Opera)



Harold Meers

Tenor

Madison Opera

Debut

Recently: *Rodolfo, La
Bohème* (Minnesota
Opera, San Diego
Opera, Des Moines

Metro Opera); Soloist (Madison Symphony
Orchestra); Macduff, *Macbeth* (Minnesota
Opera); Pinkerton, *Madama Butterfly*
(Opera Columbus, Nashville Opera);
Nadir, *The Pearl Fishers* (Nashville Opera);
Ruggero, *La Rondine* (Des Moines Metro
Opera)

Upcoming: *Hoffmann, The Tales of
Hoffmann* (Madison Opera); *Cassio cvr.,
Otello* (Metropolitan Opera)



John DeMain

Conductor

Madison Opera
Artistic Director

Madison Opera
Debut: *The Magic
Flute*

Recently with MO:

The Barber of Seville, Sweeney Todd, Fidelio

Recently: *Show Boat* (San Francisco
Opera, Lyric Opera of Chicago,
Washington National Opera); *Lost in
the Stars, The Music Man* (Glimmerglass
Festival); *Carmen, Aida* (Virginia Opera);
Porgy & Bess (Seattle Opera)

Upcoming: *La Bohème, The Tales of
Hoffmann* (Madison Opera); *Lost in the
Stars* (Washington National Opera);
Sweeney Todd (Glimmerglass Festival)

Supporting the Arts in Madison
since 1944

NEDREBO'S
F O R M A L W E A R

4522 E. Washington Ave • 241.3131
601 Junction Rd • 833.8811
With Vera's, 7857 Big Sky Dr • 827.8548
5237 Verona Rd • 271.2121
nedrebos.com

“IMAGINATION

IS MORE IMPORTANT THAN KNOWLEDGE.”

-ALBERT EINSTEIN

IMAGINE IF
YOUR WEBSITE
COULD
ENTERTAIN.

THAT WOULD BE SUAVE.
MIKHAIL BOCHAROV SUAVE.



A TOAST - TO YOUR
BEAUTIFUL, NEW WEBSITE!

makin'hey!
■ ■ ■ ■ ■ brand ! web ! print !

Imagine the possibilities at MAKIN-HEY.COM

Proud sponsors of the Madison Opera website.

MADISON OPERA CHORUS

Anthony Cao, Chorus Master

Soprano

Jill Carlson
Megan Gloss
Wendy Jones Hill
Maureen Kind
Cassandra Koob
Kathleen Leon*
Marie McManama
Connie Nelson
Julie Ottum
Elisheva Pront*
Emma Schell*
Lorie Wagner

Mezzo-Soprano

Shelly Bitner
Katie Butitta
Lavonne Dettmers
Alice Green

Mary Hartkopf
Dale Kaufman
Anna Laurenzo
Eleanor Mayerfield*
Beth Morgan
Erin Selbee
Ellen Wojtak

Tenor

Patrick Chounet
Steve Fix
Robert Goderich
Michael Hoke
Matthew Lea
Moon Lee
Thomas Leighton
Kenny Lyons
William Ottow
Scott Seyforth

Tom Stone
Doug Swenson
Dan Turek
Justin Wilder

Baritone/Bass

Robert Dinndorf
James Enzler
Michael Etwiler
David Flanders
Rick Henslin
Stan Hill
John Itson
David Lawver
Trevor Martin
Brian Schultz
Glen Siferd
Andrew Turner
John Unertl

* Madison Opera High School Apprentice

Don't be silenced

UW Health's Voice and Swallow Clinic has an international reputation for excellence in the care of voice problems. We offer leading-edge technology, diagnostics and treatment for performers, singers and actors of all ages. Call (608) 263-6190 or visit uwhealth.org/voiceswallow.

UW Health



School of Medicine
and Public Health
UNIVERSITY OF WISCONSIN-MADISON

New Subscribers save up to 50%

MADISON SYMPHONY ORCHESTRA

John DeMain | Music Director



Be Moved

by our new Season 2015-16

SEPT. 25, 26, 27

Tchaikovsky's Fourth

BEETHOVEN • COPLAND • TCHAIKOVSKY

OCT. 16, 17, 18

James Ehnes, Violin

HAYDN • BRUCH • RACHMANINOFF

NOV. 20, 21, 22

Sara Sant'Amrogio, Cello

RAVEL • SAINT-SAËNS • BERLIOZ

DEC. 4, 5, 6

A Madison Symphony Christmas

Madison Symphony Chorus

Madison Youth Choirs

Mt. Zion Gospel Choir

FEB. 12, 13, 14

Alina Ibragimova, Violin

TCHAIKOVSKY • RAVEL • BEETHOVEN

MAR. 11, 12, 13

Emanuel Ax, Piano

KABALEVSKY • FRANCK • STRAUSS • MAHLER

APR. 1, 2, 3

Garrick Ohlsson, Piano

STUCKY • STRAUSS • BRAHMS

APR. 29, 30, MAY 1

Carmina Burana

Madison Symphony Chorus

RESPIGHI • ORFF

SUBSCRIBE TODAY.

Receive the best seats at the best discounts!

To subscribe, request a brochure or for more information, visit:
madisonsymphony.org or call (608) 257-3734.

MADISON SYMPHONY ORCHESTRA

John DeMain, Music Director

VIOLIN I

Suzanne Beia
Concertmaster
Naha Greenholtz
Olga Pomolova
Elspeth Stalter-Clouse
Eleanor Bartsch
Neil Gopal
Valerie Sanders
Jon Vriesacker
Teddy Wiggins
Jessica Wiersma

VIOLIN II

Olga Draguieva
Erica Cross
Rolf Wulfsberg
Sophia Arriaga
Kathryn Taylor
Robin Ryan
Geri Hamilton
Michelle Byrne

VIOLA

Christopher Dozoryst
Renata Hornik
Sharon Tenhundfeld
Jennifer Paulson
Marika Fischer Hoyt
Micah Behr

CELLO

Karl Lavine
Karen Cornelius
Lindsey Crabb
Laurie Riss

BASS

Fredrick Schrank
Carl Davick
Zachary Betz

FLUTE

Linda Pereksta
Scott Metlicka
April Kath

OBOE

Laura Medisky
Holly Bobula

CLARINET

Nancy Mackenzie
Orlando Pimentel
Gregory Smith

BASS CLARINET

Gregory Smith

BASSOON

Cynthia Cameron-Fix
Carol Rosing

HORN

Daniel Grabois
Mary Buscanics-Jones
Kathy Krubsack
Peter Kortenkamp

TRUMPET

John Aley
Rob Rohlfing
Daniel Cross

TROMBONE

Joyce Messer
Benjamin Skroch
Michael Allsen

TUBA

Joshua Biere

TIMPANI

John Jutsum

PERCUSSION

Todd Hammes
Greg Hinz

HARP

Karen Beth Atz

KEYBOARD

Daniel Lyons

Want to learn more about opera? Join us for *Opera Novice!*

Join Madison Opera for a FREE, short, fun, and informative evening, led by General Director Kathryn Smith. Learn about different aspects of opera and its history, enjoy a live performance, and have the chance to ask questions. It's the perfect jump-start for the opera-curious.

What Makes an Opera a Classic?

Friday, October 23, 2015, 6-7pm

Opera and Literature

Friday, January 15, 2016, 6-7pm

Opera Unfinished

Friday, March 18, 2016, 6-7pm

Opera Novice is held at the Margaret C. Winston Madison Opera Center, 335 W. Mifflin Street, Madison.

For more information, visit madisonopera.org.

MADISON OPERA STAFF AND BOARD OF TRUSTEES

General Director.....	Kathryn Smith
Artistic Director.....	John DeMain
Director of Development.....	Lizabeth Tolles
Director of Finance.....	Jennifer Fenster
Marketing Manager.....	Steffanie Berg
Patron Services Manager.....	Amalia Goldberg
Artistic Manager.....	Salvatore Vasta III
Director of Production.....	Kenneth Ferencek
Technical Director and Warehouse Coordinator.....	Billy Larimore
Production Stage Manager.....	Jill Krynicki

BOARD OF TRUSTEES

President.....	Sally Miley*
Chairman.....	Thomas Terry*
Vice President.....	Phillip Certain*
Vice President.....	Jim Ruhly*
Treasurer.....	Joyce Hirsch*
Secretary.....	Patti Lucas*

Elliott Abramson*	R. Roth Judd	J. Marshall Osborn*
Carla J. Alvarado*	Connie Kinsella	John Ronzia
Martin Barrett*	Fran Klos	Charles Snowdon
Gary Bennett*	Susan Lipp	Sharyn Stumpf
George Croal	Peter Lundberg	Maryann Sumi
Robert Dinndorf	Connie Maxwell	J. Ashley Taylor
Charles Ford	Michael McArdle	Pat Turski
Gina Gialamas*	Franck Meunier	Jan Von Haden
Stephen Hurley*	Sonja Micksch	

**Executive Committee*

LIFE TRUSTEES

Aileen Jensen	Joanna Overn
---------------	--------------


ADVISORS

Bert Adams	Karen Kretschmann	Karen Walsh
Marian Bolz	Fern Lawrence	Helen Wineke
Kennedy Gilchrist	Elaine Staley	

MADISON OPERA FOUNDATION

Martin Barrett, President	Joyce Hirsch	Sally Miley
Marian Bolz	Connie Maxwell	Thomas Terry
Terry Haller		

PRODUCTION PERSONNEL

Event Coordinator/Stage Manager.....	Jill Krynicki
Technical Director.....	Billy Larimore
Lighting Designer.....	Kenneth Ferencek
Sound Technicians.....	Bag End Sound Systems, Henry Heine, President
Sound Consultant.....	Jonathan Lipp, CEO, Full Compass Systems Inc.
Ground Logistics Managers	Tim Ross, Brian Weinkauff
Assistant Event Coordinator.....	Kate Goodall
Volunteer Coordinator.....	Franck Meunier
Audio Equipment Services.....	Full Compass Systems Inc.
Chorus Master.....	Anthony Cao
Rehearsal Accompanist.....	Joseph Ross
Chorus Accompanist.....	Joy Bauman
Production Crew.....	Members of IATSE 251 
Photographer.....	James Gill Photography
Videographer.....	Jim Hoffman, Video Memories

CITY OF MADISON

Mayor.....	Paul Soglin
Alder, District 11.....	Chris Schmidt
Parks Superintendent.....	Eric Knepp
Community Events Coordinator.....	Kelli Lamberty
West Parks Supervisor.....	Laura Bauer
West District Captain of Police.....	Vic Wahl

ACKNOWLEDGEMENTS

Concourse Hotel and Governor's Club
David J. Flanders, MD and Susan J. Ecroyd

Bob and Julie Ferderer
Hilton Garden Inn

UW-Madison Voice and Swallow Clinics is the official voice care provider for Madison Opera

PARK INFORMATION

Restrooms: Portable toilets are available along both sides of Garner Park.

Accessibility: Disabled pick-up and drop-off area is located at the central walking path entrance to Garner Park on Rosa Rd. Alert Madison Opera staff or volunteers if golf cart assistance is needed.

First Aid: A first aid station and doctor are located under the tent by the basketball court. An ambulance and EMT's are available on site.



**CUNA
MUTUAL
GROUP**

Common Purpose.
Uncommon Commitment.

Proud to welcome
OPERA IN THE PARK
to our backyard!



Kathryn Smith
GENERAL DIRECTOR

 **MADISON OPERA**
WWW.MADISONOPERA.ORG

John DeMain
ARTISTIC DIRECTOR