

OPERA

in the PARK *2018*

17 years of a Madison summer tradition!

SATURDAY, JULY 21, 2018

8PM | GARNER PARK | FREE ADMISSION

Thank you to our lead sponsors

THE BERBEEWALSH
FOUNDATION

JCP

John and Carolyn Peterson
Charitable Foundation, Inc.



Raymond B. Preston
Family Foundation



OPERA IN THE PARK RAFFLE

Tickets are \$10 or 3 for \$25!

1st Prize: \$2,500

2nd Prize: \$1,000

3rd Prize: Opera Package*

** Includes Madison Opera 2018/19 season subscription for two,
plus a \$100 gift card to Food Fight Restaurants.*

Tickets are available for purchase at program tables and from select volunteers. Drawing is held at end of concert.

Enter to win and
support Opera in the Park!



Need not be present to win. Lic# R0004750A-69662

FROM OVERTURES TO OVATIONS

Gear for Every Great Performance



FULL COMPASS **40** YEARS
PRO AUDIO VIDEO LIGHTING
MUSICAL INSTRUMENTS

Shop our National Headquarters for a huge selection of musical instruments, pro audio, video and lighting.

9770 Silicon Prairie Pkwy • Madison, WI • Mon. – Fri. • 8:30 a.m. – 6:30 p.m.

608-831-7330 • fullcompass.com



**Looking for the next
addition to your
ensemble?**



madison
CAT PROJECT

Saving Cats' Lives Through Community Solutions

Adoption Fairs each Saturday from 12-3:30 at MadCat on Mineral Point Road

or visit us at Mounds in Sun Prairie 7 days a week

www.madisoncatproject.org



the power of community

Working together helps to make our community great.

Your community energy company is proud to support Opera in the Park. Visit mge.com/Foundation



Colony Brands empowers people to enrich lives. We do this by supporting our customers, our employees, and the communities in which we work and live.

ColonyBrands.com

REACH A BETTER STATE.

Two days of lively discussions with dozens of leaders in politics, education, business, culture and more.

FEATURING

David Axelrod, Kevin Conroy, Jim Doyle, David Maraniss, Tia Nelson, Karen Olivo and many more!

➔ TICKETS GO ON SALE JULY 25th

CAPTIMESIDEAFEST.COM



PRESENTED BY



UBS

The Burish Group
UBS Financial Services Inc.

Your Money Should Work as Hard as You Do

Count on our Wealth Advisory Services professionals to help you every step of the way!
Financial Planning | Investment Management | Trust Services | Retirement Plan Services

Call us today at 608.203.1201 to learn how we can help you reach your long-term financial goals.



Jasper Vaccaro, JD
SVP, Market Leader



Daniel Braun
VP, Wealth Advisor



Rod Ellenbecker
VP, Wealth Advisor



Eric Foy
VP, Retirement Plan Services



Jill Mack
VP, Private Banker

119 Junction Road
Madison, WI
WisconsinBankandTrust.com

WEALTH
ADVISORY SERVICES

PRODUCTS OFFERED THROUGH WEALTH ADVISORY SERVICES AND HEARTLAND RETIREMENT PLAN SERVICES ARE NOT FDIC INSURED, ARE NOT BANK GUARANTEED AND MAY LOSE VALUE.

We're proud to support the

MADISON OPERA

Embedded in our culture is a genuine sense of mission to make every community where we live and work better because we're there. It's a philosophy anchored in the philanthropic spirit of our founder and demonstrated in the way we do business and the individual actions of our associates.

159 Martin Luther King Jr. Boulevard | 608.250.7200

5201 East Terrace Drive | 608.249.7800

525 Junction Road | 608.203.3900

JOHNSONBANK.COM

BANKING WEALTH INSURANCE

A promotional poster for Crayfish Sommerfest. The background is dark blue with a decorative pattern of purple flowers and vines. Two large, stylized red crayfish are positioned on the left and right sides. The text is centered and reads: 'CRAYFISH SOMMERFEST' in large white letters, 'AUGUST 16' in yellow, 'AL JOHNSON'S SISTER BAY' in white, and 'Tickets at wpr.org/presents' in white. At the bottom center is the logo for Wisconsin Public Radio, which consists of three interlocking circles. Below the logo, the text 'WISCONSIN PUBLIC RADIO' is written in white.

**CRAYFISH
SOMMERFEST**

AUGUST 16

AL JOHNSON'S SISTER BAY

Tickets at wpr.org/presents

**WISCONSIN
PUBLIC RADIO**

THANK YOU TO THE SPONSORS OF OPERA IN THE PARK

**THE BERBEEWALSH
FOUNDATION**

JCP

John and Carolyn Peterson
Charitable Foundation, Inc.

FULL COMPASS
PRO AUDIO VIDEO LIGHTING
MUSICAL INSTRUMENTS

**Raymond B. Preston
Family Foundation**

**UNIVERSITY
RESEARCH PARK**
UNIVERSITY OF WISCONSIN-MADISON

**Colony
BRANDS, INC.**

The Evjue Foundation, Inc.
The charitable arm of *The Capital Times*

**Hooper
Foundation**
GENERAL
HEATING AND AIR CONDITIONING

**JOHNSON
BANK**

**MGE
FOUNDATION**

NGL
It's about people.

**WISCONSIN
BANK & TRUST**

WISCONSIN arts BOARD
Creativity, Culture, Community, Commerce.

DANE ARTS

**MADISON
Arts
COMMISSION**

**BAG
END**

**FRONTERA
AFTER DARK**

ANNO 1738
**STELLA
ARTOIS**

PREMIER | GOLF & UTILITY
VEHICLES, INC.

**UPSTAIRS
DOWNSTAIRS
CATERING**

**BerbeeWalsh Department of
Emergency Medicine**
UNIVERSITY OF WISCONSIN
SCHOOL OF MEDICINE AND PUBLIC HEALTH

With promotional assistance from

**WISCONSIN
PUBLIC RADIO**

**Magic
98**

**27
abc
WKOW**

**Madison
magazine**

DONDE SI LA MUEVES!
La Movida
WLMV 1480

Madison Opera appreciates the generous support of:

Bucky's Portable Restrooms Inc., Capital City Tent Rental,
City of Madison Parks Department, Electronic Theater Controls



Kathryn Smith, *General Director* | John DeMain, *Artistic Director*

Opera in the Park 2018

Elizabeth Caballero, *soprano*

Brenda Rae*, *soprano*

John Lindsey*, *tenor*

Levi Hernandez, *baritone*

with **Anna Parks, *mezzo-soprano*** and **Anthony Cao, *baritone***

Madison Opera Chorus

Madison Symphony Orchestra

Gary Thor Wedow, *conductor*

**Madison Opera debut*

Hosted by

Kathryn Smith, General Director of Madison Opera

and **George Smith, WKOW-27**

The concert will last approximately 2 hours, including one intermission

MADISON OPERA, INC.

335 W. Mifflin Street | Madison, WI 53703

Phone: (608) 238-8085 | Fax: (608) 233-3431 | info@madisonopera.org

THE PROGRAM

The Star-Spangled Banner

Madison Opera Chorus &
Madison Symphony Orchestra

Overture | *Candide* (Bernstein; 1956)

Orchestra

Ah! Non Credea...Ah, Non Giunge | *La Sonnambula* (Bellini; 1831)

Ms. Rae, Chorus

While sleepwalking, Amina sings of her sorrow that Elvino has broken their engagement; she then wakes up, all is happily resolved, and she sings of her joy.

Nedda! Silvio! | *Pagliacci* (Leoncavallo; 1892)

Ms. Caballero, Mr. Hernandez

Silvio asks Nedda to run away with him after the troupe's evening performance, leaving her husband, Canio. Although Nedda is afraid, she agrees.

Vesti la Giubba | *Pagliacci* (Leoncavallo; 1892)

Mr. Lindsey

Although heartbroken that his wife Nedda has betrayed him, Canio knows that he must go ahead with the evening's performance, presenting a laughing face to the world.

Easter Hymn | *Cavalleria Rusticana* (Mascagni; 1890)

Chorus

On Easter morning in a small Sicilian village, the townspeople sing a hymn.

Questo Amor, Vergogna Mia | *Edgar* (Puccini; 1889)

Mr. Hernandez

Frank sings about his love for Tigrana, who does not return his love.

Song to the Moon | *Rusalka* (Dvořák; 1901)

Ms. Caballero

The water nymph Rusalka has fallen in love with a human prince and asks the moon to tell her love that she is thinking of him.

Send in the Clowns | *A Little Night Music* (Sondheim; 1973)

Ms. Rae

Desirée has asked her ex-lover Fredrik to leave his new wife for her. When he refuses, she reflects on the irony of finally losing her timing.

A Weekend in the Country | *A Little Night Music* (Sondheim; 1973)

Ms. Parks, Ms. Rae, Mr. Cao, Ms. Caballero,
Mr. Hernandez, Mr. Lindsey, Chorus

An invitation has been issued to the Egerman household to attend a weekend at the Armfeldt country home, setting off a chain of reactions.



NGL proudly supports
Madison Opera in the Park.



Two East Gilman Street • Madison, WI 53703
800.548.2962 • www.nglic.com

National Guardian Life Insurance Company (NGL) is not affiliated
with The Guardian Life Insurance Company of America, a/k/a The
Guardian or Guardian Life. CIMO 06/18

THE PROGRAM

~ INTERMISSION ~

Sull' Aria | *The Marriage of Figaro* (Mozart; 1786) Ms. Caballero, Ms. Rae
The Countess dictates a love letter for Susanna to send to the Count, as part of a ruse to trick him.

O Mimì, Tu Più Non Torni | *La Bohème* (Puccini; 1896) Mr. Lindsey, Mr. Hernandez
Rodolfo and Marcello are trying to work, but can't help thinking about their ex-girlfriends, Mimì and Musetta.

Signore, Ascolta! | *Turandot* (Puccini; 1926) Ms. Caballero
Liù begs Prince Calaf not to risk his life by submitting to Princess Turandot's set of riddles.

Nessun Dorma | *Turandot* (Puccini; 1926) Mr. Lindsey, Chorus
Although a decree has gone out that no one will sleep in Peking until Calaf's name is discovered, Calaf himself knows that he will be triumphant, and Turandot will marry him.

Ya Mis Horas Felices | *La del Soto del Parral* (Soutullo and Vert; 1927) Mr. Hernandez
Germán contrasts his troubled situation with the carefree happiness of his farmhands, yearning for a return to the blissful earlier times with his beloved wife.

Glitter And Be Gay | *Candide* (Bernstein; 1956) Ms. Rae
After escaping the war that destroyed her home, Cunegonde must support herself in the Paris demimonde, concealing her unhappiness with laughter - although there are compensations, too.

Lucky To Be Me | *On The Town* (Bernstein; 1944) Mr. Lindsey, Chorus
Gabey, a sailor on 24-hour leave in New York City, is thrilled that his dream girl has agreed to go on a date with him.

De España Vengo, Soy Española | *El Niño Judío* (Luna; 1918) Ms. Caballero
In response to the Rajah of India's curiosity, Concha sings about her Spanish homeland.

Blah, Blah, Blah | *Delicious* (Gershwin; 1931) Mr. Hernandez
A musician improvises a love song similar to the ones he hears on the radio.

I Could Have Danced All Night | *My Fair Lady* (Loewe; 1956) Ms. Rae, Chorus Women
After celebrating a breakthrough in her diction studies, Eliza declares that she is too excited to go to sleep.

It's a Grand Night for Singing | *State Fair* (Rodgers; 1945) Tutti, Chorus
At the Iowa State Fair, newly-met couples enjoy the evening dance.

Repertoire subject to change.



universityresearchpark.org • info@urp.wisc.edu • (608) 441-8000

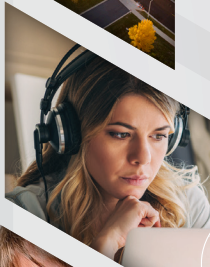
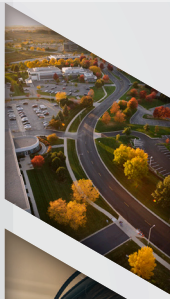
Where Wisconsin IDEAS Flourish

University Research Park is a neighborhood of ideas, entrepreneurship, and opportunity, positively impacting Wisconsin and beyond.



Talented, innovative community actively engaged in Wisconsin's entrepreneurial movement.

urpat1403.com



A network of highly qualified mentors, working to guide emerging entrepreneurs to business success.
merlinmentors.org



Professional work environment that fosters a vibrant community of innovative thinkers.
madworkscoworking.org



We are proud to support the 17th year of a Madison summer tradition!

Photo by James Gill for Madison Opera



Please Touch

Farley's House Of Pianos[™]

For 44 years we've offered musicians beautifully restored heirloom grands and glistening new and used pianos. Come explore the style, sound and touch of over one hundred pianos.

See & hear pianos at farleypianos.com
6522 Seybold Rd, Madison · 608.271.2626

Bravo!

Supporting the Arts in Madison since 1944

NEDREBO'S
FORMAL WEAR

4522 E. Washington Ave. • 608-241-3131
601 Junction Rd. • 608-833-8811
nedrebos.com

MADISON OPERA

DO YOU LIKE WHAT YOU HEAR TONIGHT? BECOME A SEASON TICKET-HOLDER!

Opera comes to life when hundreds of people who pour their hearts and souls into it – onstage, backstage, and in the orchestra pit – are joined by thousands of people in the audience. At its core, operas are great stories told through brilliant music, performed in front of an audience ready to contribute their own emotions to the experience.

Come and be part of it all.

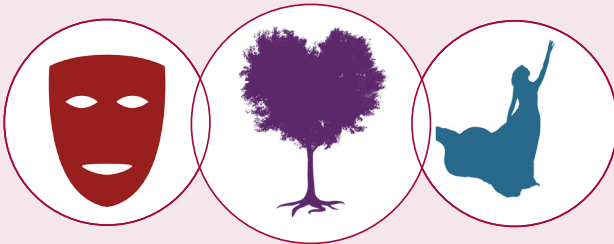
Our 2018/19 season shows off all the facets of this glorious art form. The dramatic side is represented by the double-bill of *Cavalleria Rusticana* and *Pagliacci*, whose twin stories of passion, jealousy, revenge, and murder are perhaps the most “operatic” of operas.

The lighter side is represented by Sondheim’s *A Little Night Music*. Acclaimed as a “grown-up operetta” when it premiered, this story of love lost and found across generations, set to a waltz-time score, has become a modern classic.

The magical side is represented by Dvořák’s *Rusalka*. Inspired by the classic fairy tale *The Little Mermaid*, its beautiful story of impossible love is set to one of the most gorgeous scores in opera.

**Please join us to celebrate and share our humanity
with a season of glorious operatic performances.**

**Buy season tickets and see all three operas
for as little as \$51!**



Don't miss a word! English translations are projected above the stage, ensuring that you can fully immerse yourself in these brilliant stories.

2018/19 SEASON

CAVALLERIA RUSTICANA

BY
PIETRO MASCAGNI

& Pagliacci

BY RUGGERO LEONCAVALLO

NOVEMBER 2 & 4, 2018

OVERTURE HALL

A Little Night Music

MUSIC AND LYRICS BY STEPHEN SONDHEIM
BOOK BY HUGH WHEELER

FEBRUARY 8 & 10, 2019

CAPITOL THEATER

RUSALKA

BY ANTONÍN DVOŘÁK

APRIL 26 & 28, 2019

OVERTURE HALL

Season tickets: 608.238.8085, or online at madisonopera.org

Single tickets on sale September 1: 608.258.4141,
or online at overturecenter.org

Magic 98

PROUDLY
SUPPORTING
THE ARTS

 Mid-West Family
Broadcasting.

RADIO STATION OF THE YEAR

(LARGE MARKET): WLMV-AM



¡DONDE SI LA MUEVES!

La Movida
94.5 & 1480



GEORGE

AMBER



27_{abc} **NEWS**
WE'VE GOT YOU COVERED
WEEKNIGHTS AT 5, 6 & 10PM

MEET THE ARTISTS



Elizabeth Caballero - soprano

Madison Opera Debut: *Opera in the Park 2007*

Recently with MO: *Florencia, Florencia en el Amazonas; Donna Anna, Don Giovanni; Violetta, La Traviata; Micaëla, Carmen* (2009)

Recently: *Mimi, La Bohème* (Metropolitan Opera, Hawaii Opera Theater); *Cio-Cio San, Madama Butterfly* (Pensacola Opera); *Violetta, La Traviata* (Compañía Lírica de Costa Rica, Opera Carolina); *The Moon, Before Night Falls* (Florida Grand Opera); *Nedda, Pagliacci* (Arizona Music Fest)

Upcoming: *Governess, The Turn of the Screw* (Seattle Opera); *Mimi, La Bohème* (Austin Opera)



Levi Hernandez - baritone

Madison Opera Debut: *Papageno, The Magic Flute* (2006)

Recently with MO: *Alvaro, Florencia en el Amazonas*

Recently: *Ford, Falstaff* (Intermountain Opera); *Alvaro, Florencia en el Amazonas* (San Diego Opera, Arizona Opera); *Marcello, La Bohème* (Opera Colorado); *Shuisky, Dimitrij; Guglielmo, Le Villi; Remigio, La Navarraise* (BARD Summerscape Music Festival); *Pa Joad, The Grapes of Wrath; Music Master, Ariadne auf Naxos* (Opera Theatre of St. Louis); *Sharpless, Madama Butterfly; Germont, La Traviata* (Opera Roanoke)

Upcoming: *Rambaldo, La Rondine* (Minnesota Opera); *Sharpless, Madama Butterfly* (Virginia Opera); *Pa Joad, The Grapes of Wrath* (Michigan Opera Theater); *Rabbi Lampert, Enemies, A Love Story* (Kentucky Opera)



John Lindsey- tenor

Madison Opera Debut

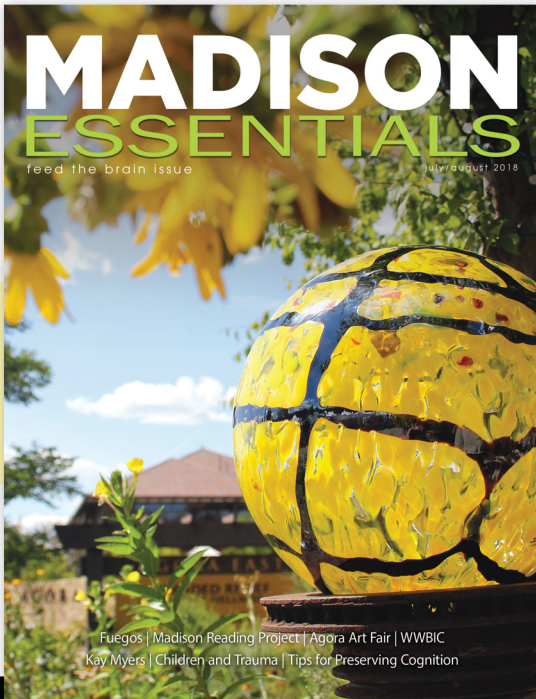
Recently: *Froh, Das Rheingold* (Arizona Opera); *Števa, Jenůfa* (Pacific Opera Victoria); *Jonathan Dale, Silent Night* (Michigan Opera Theatre); *Narraboth, Salome* (Minnesota Orchestra); *Ben Marco, The Manchurian Candidate* (Austin Opera); *Don José, Carmen* (Opera San Jose); *Monostatos, The Magic Flute* (Cincinnati Opera, Minnesota Opera); *Lloyd, The Shining* (Minnesota Opera); *Joe, La Fanciulla del West* (Des Moines Metro Opera)

Upcoming: *Jonathan Dale, Silent Night* (Austin Opera); *The Prince, Rusalka* (Madison Opera)



MADISON ESSENTIALS

We know the essential places
to dine, shop, and play.



Free at over 200 locations
and through an
online subscription.

Now
bimonthly!



madisonessentials.com

MEET THE ARTISTS



Brenda Rae - soprano

Madison Opera Debut

Recently: Cunegonde, *Candide*; Lucia, *Lucia di Lammermoor*; Violetta, *La Traviata* (Santa Fe Opera); Amina, *La Sonnambula*; Glida, *Rigoletto*; Zdenka, *Arabella* (Oper Frankfurt); Zerbinetta, *Ariadne auf Naxos*; The Queen of the Night, *The Magic Flute* (Bayerische Staatsoper); Amenaide, *Tancredi* (Opera Philadelphia); Lulu, *Lulu* (English National Opera)

Upcoming: Konstanze, *The Abduction from the Seraglio* (Opernhaus Zürich); Elvira, *I Puritani* (Oper Frankfurt); Ginevra, *Ariodante* (Lyric Opera of Chicago); Semele, *Semele* (Théâtre des Champs-Élysées)



Anna Parks - mezzo-soprano

Madison Opera Debut: Third Lady, *The Magic Flute* (2017)

Recently: Madeleine Griffith, *For Those in Peril* (Evanston Chamber Opera); Soloist, *Opera in the Garden* (Florentine Opera); Soloist, *The Three-Cornered Hat* (Madison Symphony Orchestra)



Anthony Cao - baritone

Madison Opera Debut: Messenger, *La Traviata* (2011)

Recently with MO: Guard, *Dead Man Walking*

Madison Opera Chorus Master since 2010
Director of Choirs, Madison West High School



Gary Thor Wedow - conductor

Madison Opera Debut: *Opera in the Park 2012*

Recently with MO: *The Magic Flute* (2017), *Opera in the Park 2016*

Recently: *L'Incoronazione di Poppea* (Cincinnati Opera); *Die Fledermaus*, *Lucia di Lammermoor*, *The Marriage of Figaro* (Utah Opera); *Il Combattimento di Tancredi e Clorinda*, *I Have No Stories to Tell You* (Opera Philadelphia); *Orfeo ed Euridice* (Des Moines Metro Opera); *La Cenerentola* (San Diego Opera)

Upcoming: *Don Pasquale* (Pittsburgh Opera), *La Calisto* (Shepherd School of Music); *Giulio Cesare* (Jacobs School of Music); *Considering Matthew Shepherd* (Berkshire Choral International)

*Congratulations to Madison Opera
for 17 years of Opera in the Park*

CHOCOLATERIAN

EVERYDAY. CHOCOLATE.

Middleton
6637 University Ave
836-1156

*Madison's Wine and Chocolate Lounge
Work from home with us!*

isthmus

vocal ensemble

Michael McGaghie, artistic director

"The World's Most Temporary Choir"

PRESENTING OUR HORIZON CONCERT

FRIDAY, AUGUST 3, 2018

7:30PM

LUTHERAN CHURCH OF THE LIVING CHRIST

SUNDAY, AUGUST 5, 2018

3PM

CHRIST PRESBYTERIAN CHURCH

isthmusvocalensemble.org



AMERICAN PLAYERS THEATRE

SPRING GREEN, WI

CELEBRATE SUMMER

Chris Klopatek, *As You Like It*. Photo by Liz Lauren.



**“THE KIND OF WANDERLUST-INSPIRING
HIGHLIGHT WE LOVE ABOUT SUMMER THEATER”
- THE NEW YORK TIMES**

BOX OFFICE: 608-588-2361/WWW.AMERICANPLAYERS.ORG



GREAT MUSIC DESERVES TO BE HEARD.

Enjoy the full warmth & richness
of your music collection in
stunning High-Fidelity with
Murfie HiFi Streaming.

Upload, preserve and enjoy your CD & Vinyl collection like never before in
stunning High-Fidelity on mobile and desktop. Buy & sell rare and one-of-
a-kind albums on the world's largest HiFi Marketplace.

murfie

Get more from your music. Get Murfie. Learn more at Murfie.com

FREE SHIPPING WITH CODE **OPERA721**



“Western Australia's Splendid Fairy-
Wrens are one-of-a-kind. I've
watched the way they play and interact
together, they like to do a Mexican
wave and play leapfrog. They play
chase, preen each other and snuggle up
next to each other on a twig... They are
family,” says author and photographer
Mark Eatwell. Photo ©JudyWalker Photography

8402 Old Sauk Rd. , Middleton

M-F 9-7 ~ Sat. 9-6 ~ Sun. 11-5
wbumadison.com **608-664-1414**

We Love the Way You Sing!



OITP18

Judy Walker Photography 2018 ©

MADISON OPERA CHORUS

Anthony Cao, Chorus Master

Soprano

Elizabeth Anderson*
Irelyn Baumberger*
Saskia den Boon*
Jill Carlson
Megan Gloss
Emma Goecks*
Dani Gratz*
Katya Hall
Vicky Harris*
Aimee Kujak*
Cecilia League*
Isabel Mancl*
Virginia Morgan*
Connie Nelson
Julie Ottum
Lorie Wagner
Peggy Walters
Alexandra Zulauf

Mezzo-Soprano

Lavonne Dettmers
Alice Green
Mary Hartkopf
Dale Kaufman
Maureen Kind
Beth Morgan
Sarah Mroz
Laura Muller
Erin Selbee
Wendy Van Asten
Ellen Wojtak

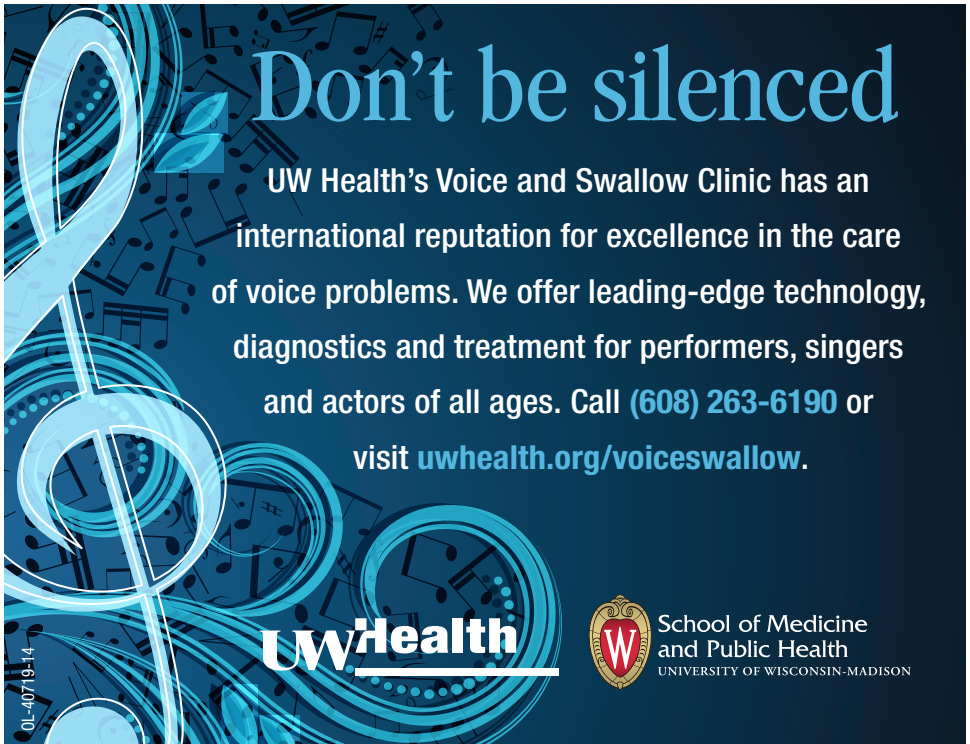
Tenor

George Abbott III
Jeff DeThorne
Owen Ladd
Sam LaRoi*
Paul Maurer
Scott Seyforth
Easton Smith
Tom Stone
Douglas Swenson
Dan Turek
Peter Woods

Baritone/Bass

Andy Ball
Nickolay Borisov
Robert Dinndorf
David Flanders
Stan Hill
John Itson
David Lawver
Brian Schultz
Glen Siferd
Andrew F. Turner
John Unertl
Greg Walters


* Madison Opera High School Apprentice



Don't be silenced

UW Health's Voice and Swallow Clinic has an international reputation for excellence in the care of voice problems. We offer leading-edge technology, diagnostics and treatment for performers, singers and actors of all ages. Call (608) 263-6190 or visit uwhealth.org/voiceswallow.

UW Health

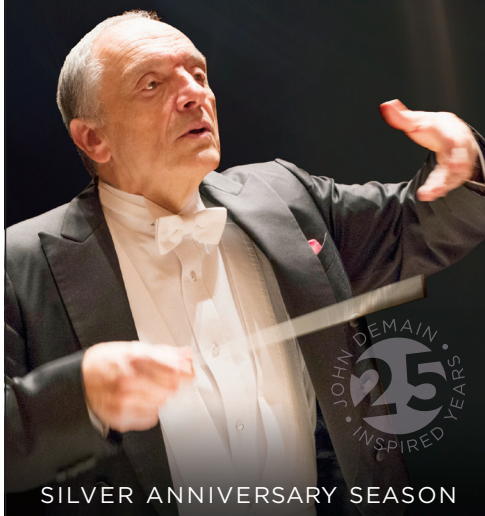


School of Medicine and Public Health
UNIVERSITY OF WISCONSIN-MADISON

01-40719-14

MADISON SYMPHONY ORCHESTRA

JOHN DEMAIN | MUSIC DIRECTOR



SILVER ANNIVERSARY SEASON

25 YEARS OF GREAT MUSIC
with John DeMain

Subscriptions available now!
New subscribers save up to **50%**
Single tickets go on sale
August 18, 2018

Discover more and subscribe:
MADISONSYMPHONY.ORG/18-19

SEASON SPONSORS



Programs and artists subject to change. Photo by Greg Anderson

2018 | 2019

SEASON PREMIERE: AX IS BACK!

SEPTEMBER 28, 29, 30 — 2018

Emanuel Ax, *Piano*

HIGDON | PROKOFIEV | BRAHMS

EPIC ROMANCE

OCTOBER 19, 20, 21 — 2018

Tania Miller, *Guest Conductor*

Zuill Bailey, *Cello*

OESTERLE | ELGAR | TCHAIKOVSKY

REMEMBERING LENNY

LEONARD BERNSTEIN AT 100

NOVEMBER 9, 10, 11 — 2018

Christopher Taylor, *Piano*

BERNSTEIN | BEETHOVEN

A MADISON SYMPHONY CHRISTMAS

NOV. 30, DEC. 1, 2 — 2018

Cecelia Violetta Lopez, *Soprano*

Kyle Ketelsen, *Baritone*

Madison Symphony Chorus

Madison Youth Choirs

Mt. Zion Gospel Choir

PICTURES AT AN EXHIBITION

FEBRUARY 15, 16, 17 — 2019

James Ehnes, *Violin*

HARBISON | BRAHMS | MUSSORGSKY

ORCHESTRAL BRILLIANCE: THREE VIRTUOSI

MARCH 8, 9, 10 — 2019

Naha Greenholtz, *Violin*

JJ Koh, *Clarinet*

Joshua Biere, *Tuba*

SCHUBERT | PROKOFIEV | DEBUSSY

VAUGHAN WILLIAMS | GERSHWIN

AN AUSPICIOUS DEBUT: MARC-ANDRÉ HAMELIN

APRIL 12, 13, 14 — 2019

Marc-André Hamelin, *Piano*

MOZART | STRAUSS | RAVEL | DEBUSSY

SYMPHONY OF A THOUSAND

MAY 3, 4, 5 — 2019

8 SINGERS | 3 CHORUSES | 500+ ARTISTS ON STAGE

MAHLER SYMPHONY NO. 8

BEYOND THE SCORE® MENDELSSOHN SYMPHONY NO. 4: WHY ITALY?

JANUARY 20 — 2019

LIVE ACTORS | MULTIMEDIA PROJECTIONS

Beyond the Score® is separate from the Subscription Series — only subscribers may purchase tickets to this special single concert presentation before single tickets go on sale August 18, 2018. *Beyond the Score®* is a production of the Chicago Symphony Orchestra. Gerard McBurney, Creative Director for *Beyond the Score®*.

MADISON SYMPHONY ORCHESTRA

John DeMain, Music Director

VIOLIN I

Suzanne Beia
Concertmaster
Olga Pomolova
Valerie Sanders
Neil Gopal
Elspeth Stalter-Clouse
Tim Kamps
Laura Mericle
Alex Norris

VIOLIN II

Xavier Pleindoux
Hillary Hempel
Erica Cross
Rolf Wulfsberg
Olga Draguieva
Kathryn Taylor
Robin Ryan
Michelle Kaebisch

VIOLA

Christopher Dozoryst
Diedre Buckley
Renata Hornik
Elisabeth Deussen
Sharon Tenhundfeld
Janse Vincent

CELLO

Lisa Bressler
Karen Cornelius
Laurie Riss
Adam Ayers

BASS

David Scholl
Carl Davick
Zachary Betz

FLUTE

Dawn Lawler
Brandon LePage
April Kath

PICCOLO

April Kath

OBOE

Marc Fink
Jennifer Morgan

CLARINET

JJ Koh
Nancy Mackenzie

BASS CLARINET/ALTO SAXOPHONE

Greg Smith

BASSOON

Cynthia Cameron-Fix
Carol Rosing

HORN

William Muir
Matt Beecher
Mary Buscanics-Jones
Daniel Worsham

TRUMPET

John Aley
Dave Cooper
Rob Rohlfing

TROMBONE

Joyce Messer
Benjamin Skroch
Cory Wurtz

TUBA

Josh Biere

TIMPANI

Alison Chang

PERCUSSION

Nicholas Bonaccio
Greg Hinz

HARP

Johanna Wienholts

KEYBOARD

Scott Gendel

Get Social with
Madison Opera

#oitp18

@madisonopera

@madopera

@madison_opera

/madisonopera



MADISON OPERA STAFF AND BOARD OF TRUSTEES

General Director.....	Kathryn Smith
Artistic Director.....	John DeMain
Director of Development.....	Lizabeth Tolles
Director of Finance.....	Jennifer Fenster
Marketing Manager.....	Jonathan Schroerlucke
Artistic Manager.....	Salvatore S. Vasta III
Director of Production.....	Kenneth Ferencek
Technical Director and Warehouse Coordinator.....	Billy Larimore
Production Stage Manager.....	Jill Krynicki

BOARD OF TRUSTEES

President.....	Phil Certain*
Chairman.....	Thomas Terry*
Vice President.....	Charles Snowdon*
Vice President.....	Maryann Sumi*
Treasurer.....	John Ronzia*
Secretary.....	Deepika Rajesh*
Immediate Past President.....	Sally Miley*

Carla J. Alvarado
Maytee Aspuro
Martin Barrett*
Gary Bennett
Leanne Cordisco
Peyton Engel
David Flanders
Brian Haltinner
Brandon Hayes

R. Roth Judd
Connie Kinsella
Fran Klos
John Lemke
Susan Lipp
Patti Lucas
Pete Lundberg
Connie Maxwell
Michael McArdle

Sonja Micksch
J. Marshall Osborn*
Jim Ruhly
Wendy Moore Skinner
Kirsten Spira
Sharyn Stumpf
J. Ashley Taylor
Toby Wallach
Susan Zaeske

**Executive Committee*

LIFE TRUSTEE

Aileen Jensen

ADVISORS

Bert Adams
Marian Bolz
Kennedy Gilchrist

Fern Lawrence
Elaine Staley

Karen Walsh
Helen Wineke

MADISON OPERA FOUNDATION BOARD OF DIRECTORS

Martin Barrett,
President
Marian Bolz

Phil Certain
Terry Haller
Joyce Hirsch

Connie Maxwell
J. Marshall Osborn
John Ronzia
Thomas Terry

PRODUCTION PERSONNEL

Event Coordinator/Stage Manager.....	Jill Krynicki
Technical Director.....	Billy Larimore
Lighting Designer.....	Kenneth Ferencek
Sound Technicians.....	Bag End Sound Systems, Henry Heine, President
Sound Consultant.....	Jonathan Lipp, Founder, Full Compass Systems Inc.
Ground Logistics Managers	Tim Ross, Brian Weinkauf
Assistant Event Coordinator.....	Kate Goodall
Volunteer Coordinator	Grace Ferencek
Audio Equipment Services.....	Full Compass Systems Inc.
Chorus Master.....	Anthony Cao
Rehearsal Accompanist.....	Scott Gendel
Chorus Accompanist.....	Joy Bauman
Production Crew.....	Members of IATSE 251
Photographer.....	James Gill Photography
Videographer.....	Ray Ibsen, Video Memories

CITY OF MADISON

Mayor.....	Paul Soglin
Alder, District 11.....	Arvina Martin
Parks Superintendent.....	Eric Knepp
Community Services Manager.....	Claire Oleksiak
West Parks Supervisor.....	Laura Bauer
West District Captain of Police.....	Cory Nelson

ACKNOWLEDGEMENTS

Concourse Hotel and Governor's Club
CUNA Mutual Group
Susan Ecroyd & David Flanders
Wes and Cindy Fenster
Jamie Hess, M.D.

Hilton Garden Inn
Michael Hoke
Thomas Terry
Wisconsin Public Television

UW-Madison Voice and Swallow Clinics
is the official voice care provider for Madison Opera.

PARK INFORMATION

Restrooms: Portable toilets are available along both sides of Garner Park.

Accessibility: Disabled pick-up and drop-off area is located at the central walking path entrance to Garner Park on Rosa Road. Alert Madison Opera staff or volunteers if golf cart assistance is needed.

First Aid: A first aid station and doctor are located under the tent by the basketball court. An ambulance and EMT's are available on site.

Together We Can Do Great Things



SUPPORT *OPERA IN THE PARK* AND YOUR GIFT WILL BE DOUBLED!

Thank you for joining us for the 17th annual *Opera in the Park*. Madison Opera is committed to producing this incredible evening for decades to come, but we need your help. We are a non-profit arts organization, and *Opera in the Park* is only possible with donations from members of our community, including you.

Please help us keep great music accessible to everyone by making a gift to the Opera in the Park Fund. Any donation you make between now and August 31, 2018 will be matched by anonymous friends of Madison Opera, dollar-for-dollar, up to \$25,000! This will double your gift's impact and help us keep *Opera in the Park* a FREE event.

Donations can be made in the park tonight, online at madisonopera.org, by mail, or by calling us at 608-238-8085.

**Thank you for supporting Opera in the Park.
Together, we can look forward to sharing this magical night every summer.**

Madison Opera is a registered 501(c)(3) charitable organization,
so every gift is tax-deductible to the extent allowed by law.